

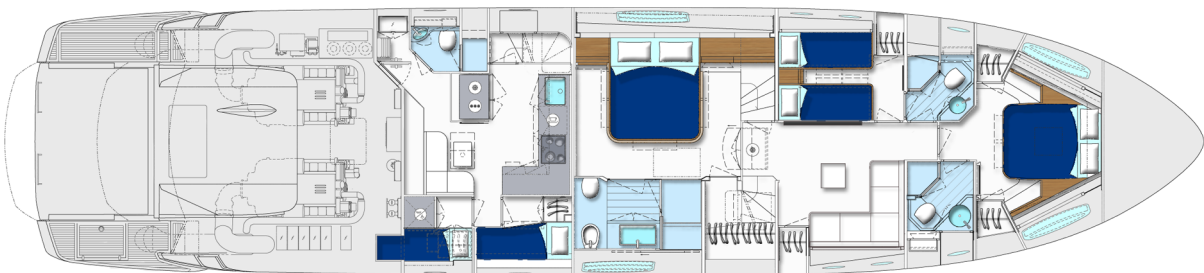
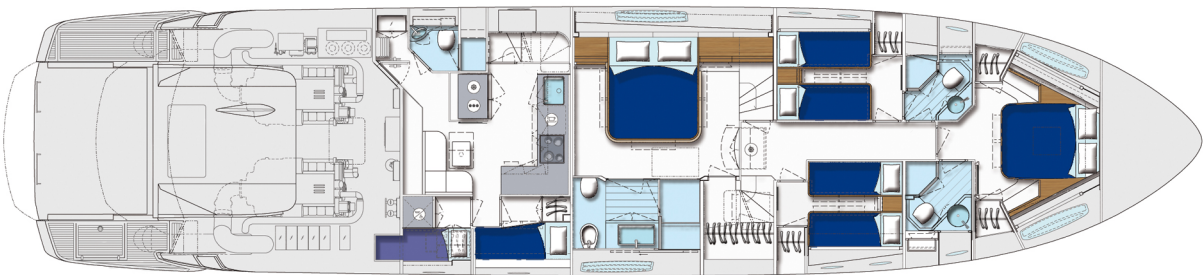
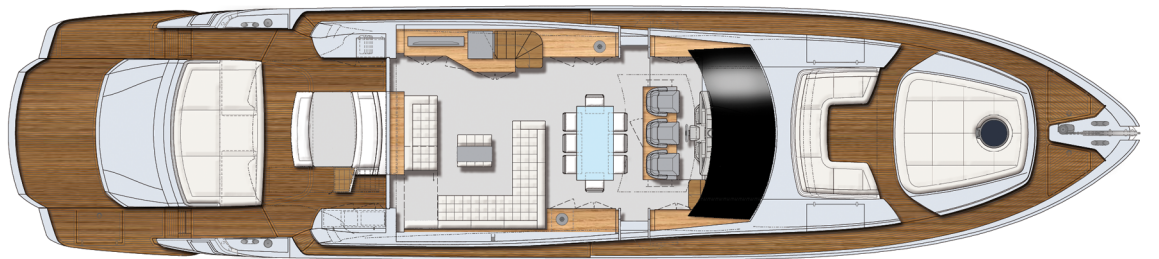
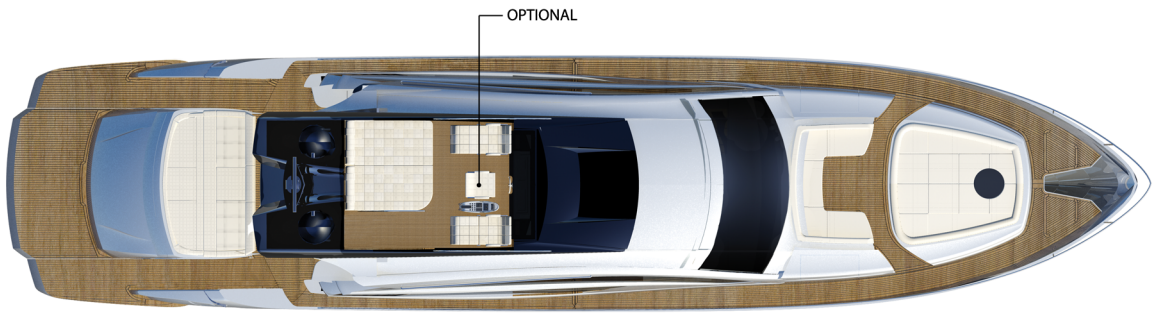
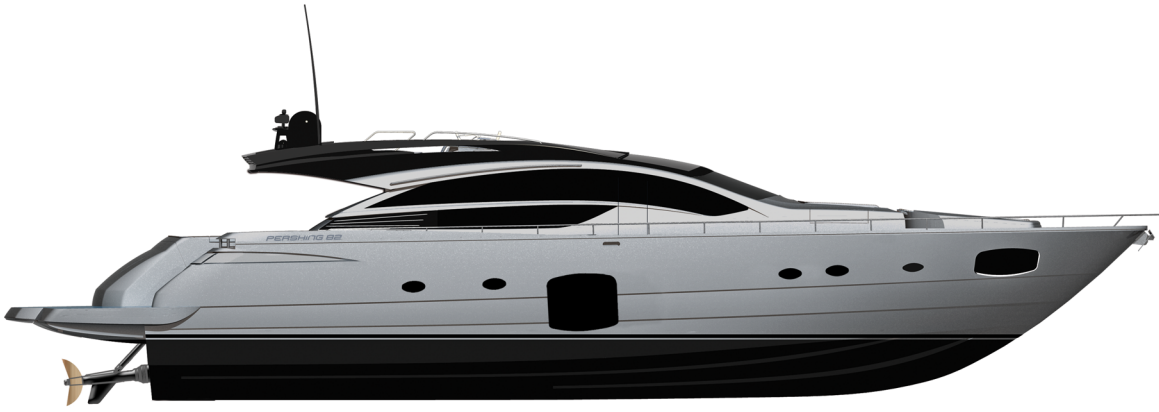
PERSHING 82



STAND OUT

AMAS

PERSHING 82



HULL, PROPULSION AND TECHNICAL PROJECT: FERRETTIGROUP ENGINEERING DEPARTMENT
YACHT DESIGNER: FULVIO DE SIMONI

EN TECHNICAL CHARACTERISTICS

ENGINES

2 x MTU 16V 2000 M96L Power 2638 mhp / 1939 kW at 2450 rpm - TS 95S

HULL TYPE

20° deadrise Monohedron hull with spray rails

LOA = Overall Length standard ISO 8666	81 ft. 11 in.
LH = Hull length standard ISO 8666	78 ft. 8 in.
LWL = Waterline length (boat fully laden)	60 ft. 10 in.
Maximum beam	18 ft. 1 in.
Overall height from keel to radar arch	19 ft. 6 in.
Ht = Minimum transport height from keel	19 ft. 6 in.
Displacement unladen	124120 lbs.
Displacement laden	144619 lbs.
Depth under propellers (boat fully laden)	4 ft. 7 in. ^[4]
P1 = transom	3 ft. 3 in.
Fuel tank capacity	1572 US Gals.
Water tanks capacity	343 US Gals.
Maximum number of people on board	16
Light displacement maximum speed = 1/3 laden	(MTU 2638) 50 knots ^[2]
Nr. Cabins	4
Nr. Bathrooms	3
Nr. Crew Cabins	2
Nr. Crew Bathrooms	1
Safety equipment	12 ^[3]
Design category	A (2013/53/EU)
Certification documents	B + F + Aa (Sound Emission)
.....	RINA S.p.a.

STANDARD ISO 8666 

HULL/DECK CONSTRUCTION MATERIAL

Hull: construction from female mould with sandwich bottom with balsa wood core and sandwich sides with closed cell PVC core; reinforcement fibres: E-glass.

Stratification of longitudinal stiffeners with polyurethane foam; stratification of transversal stringers with PVC core at bow, with polyurethane foam at stern.

Deck and superstructure: construction from female mould with vacuum infusion lamination with vinylester resin in closed cell PVC core sandwich format.

Main bulkheads and interior structural floors (excluding the engine room) in sandwich format and vacuum infusion lamination.

Structural tanks for fuel and fresh water are layered with vinylester resin.

Areas of the deck such as: the bow area (except the mooring area), side decks, walking areas of the cockpit, swim platform and aft steps, are covered with teak sealed with polymerized black rubber caulking. Other areas according to the position have an anti slip or polished gelcoat finish such as hull and superstructure.

STANDARD FURNITURE WOOD: Alpi Dark Grey preformed wood

PAINTING

Keel painting: black antifouling paint, with an epoxy primer basecoat.

External painting: areas above the water line that are painted in a different colour according to the standard Pershing shipyard graphics are treated with a bi-component polyurethane paint in black colour.

(1) This technical specification is valid and refers to yachts ordered as of 1 September 2019.

(2) Performances are approximate and they refer to the standard equipment of the boat, at 1/3 of load corresponding to TON 59 (130071 LB), performances estimated at the following conditions: calm sea, absence of wind, 25° air temperature, clean hull and special propellers set for those conditions and 6 people on board. Overloading the yacht by 1 TON / 2205 LB top speed decreases of 1 knot.

(3) Pershing shipyard does not supply complete safety equipment as Pershing yachts are delivered to all countries. Owners must therefore complete the safety equipment with the devices required in their own specific country. Pershing can, however, supply safety equipment upon request.

(4) The stated draft is with the surface drives in the zero position.

PERSHING 82

STANDARD EQUIPMENT

◆ UPPER SUN DECK

ACCESS TO THE SUNDECK

- Chaise longue (2)
- LED lights
- Removable safety railing
- Retractable electrohydraulic ladder
- Sliding door with teak and hatch for closure
- Stainless steel handrail for stair
- Stainless steel side handrail
- Sunpad in vinyl
- Teak
- Waterproof speakers with independent volume control (2)

ANTENNAS AREA

- Carter
- Dome (2)
- GPS antenna
- Horn
- Lights mast in stainless steel
- Navigation lights for Italian Flag
- Signal mast in GRP
- VHF antenna (2)

◆ MAIN DECK

COCKPIT/OUTSIDE AFT

DINETTE

- Amplifier with remote control and loudspeakers
- Barbecue
- Ceiling lights with LED stripes
- Courtesy LED lights
- Emergency engine shut down remote control
- Fire extinguishing system and alarm activation remote control from starboard side furniture
- Fresh water tap
- GRP bench with seat upholstered in vinyl
- GRP furniture on starboard
- GRP sofa with seat and backrest in white vinyl
- GRP table with electric movement
- Icemaker in cockpit connected to main water tank
- Sink
- Teak

ACCESS TO STERN

SUNBATHING AREA

- GRP sofa with seats and backrest upholstered in white vinyl
- Stainless steel handrail Ø 30 mm, on the aft spoiler

ACCESS TO CREW

QUARTER AND ENGINE ROOM

- GRP furniture on portside with access to crew quarter and engine room
- Ladder in inox and teak

AFT MOORING STATION

- Aft mooring storage (2)
- Capstan 1700W with foot control (2)
- Fairlead in stainless steel with rolls (2)
- Stainless steel mooring cleat (2)

AFT GARAGE

- Hangar door
- Kit hydraulically powered tailgate
- Tender towing system with winch
- Tender Williams 325 TJ
- Waterproof lights in garage (2)

ACCESS TO THE BATHING

PLATFORM

- Aft steps in teak
- Black water pump out cap
- Courtesy lights for steps
- External shower
- Fresh water filling cap
- Fresh water tap
- Fuel filling cap
- Hatch on bathing platform stbd side
- LED lighting
- Shore power 100A
- Shore water inlet
- Stainless steel gate for cockpit entry (2)
- Swim ladder, hydraulic, hideaway with alarm
- Swimming teak platform with hydraulic movement
- Telescopic hydraulic hideaway gangway with (2) remote controls
- Underwater light (4)

SIDE WALKWAYS

- Electric pantograph side door (2)
- Side locker at bow dinette with closure (2)
- Side Pershing silicon logo (2)
- Stainless steel grab on side of superstructure (2)
- Stainless steel mooring cleat at midship (2)
- Stainless steel railing Ø 40 mm with stanchions Ø 30 mm and hooking points
- Steel rub-rail
- Teak

BOW MOORING STATION

- Access to bow locker with double hatch and closure

- Anchoring and mooring bow
- Basket chain
- External shower
- Galvanized anchor with joint (1 x 50kg)
- Galvanized chain 100m 14mm
- Mooring LED lights
- Stainless steel mooring bow ancor roller
- Stainless steel mooring cleat bow (2)
- Windlass 2700 W with waterproof control pad

OUTSIDE FORWARD

DINETTE

- Amplifier with remote control and loudspeakers
- GRP sofa with seats and backrest upholstered in white vinyl
- Led Lighting
- Manual bimini top

ACCESS TO BOW

SUNBATHING AREA

- Amplifier with remote control and loudspeakers
- GRP sofa with seats and backrest upholstered in white vinyl
- Teak

HELM STATION

- Bow thruster joystick
- Built-in autopilot
- Ceiling spot LED lights over side doors
- Chart-Plotter (2)
- Compass
- Co-pilot seat covered with Poltrona Frau leather with double electric control (2)
- EASYSET
- Echo box with 1Kw in-hull transducer
- Electronic digital LCD engine control panel (2)
- Electronic levers for engine controls
- Engine room remote camera on plotter screen
- Glove compartments (2)
- Helm wheel in Poltrona Frau leather
- Instrument dashboard upholstered in Poltrona Frau leather
- NAVIOP display
- Panels in carbon fiber
- Pilot seat with covered with Poltrona Frau leather with double electric control
- Rudder angle, trim tabs, water and fuel levels
- Sliding roof with electric movement
- Soft touch switch plates
- Surface propellers trim joystick

- Telephone interface GSM/Voice/Fax American version
- Tiller
- Trim tabs joystick
- VHF radio
- Windshield in transparent tempered glass
- Windshield wiper/washer (2)

SALOON

- Audio-video system
 - Electric lifting mechanism for TV
 - Hideaway 40" LED TV
 - Hi-fi surround: "5+1" system (60Hz) sintoamplifier with blu-ray
 - Touch screen remote control
- Ceiling covered in Poltrona Frau leather
- Ceiling LED lights with indirect lighting
- Ceramic set for 12 people
- Chairs upholstered in Poltrona Frau leather (4)
- Digitally controlled A/C system
- Dimmer
- Dining table for 6 people
- Domotics control panel
- Electric fabric roll curtains for side windows and sliding aft door
- Fridge
- Furniture covered in wood
- Furniture covered in wood starboard side
- Glasses set for 12 people
- Hideaway sliding aft door in black painted aluminium and crystal
- Intercom cordless system
- L shaped sofa in Poltrona Frau leather
- Ottoman-table upholstered in Poltrona Frau leather with leather tray
- Parquet floor
- Poltrona Frau folding chairs in aluminium and leather (4)
- Rug under the sofa
- Side windows in monolithic / stratified tempered glass
- Sliding sofa double seats in Poltrona Frau leather
- Soft touch switch plates
- Stainless steel cutlery set for 12 people
- Structural floor
- Teak holder for glasses and plates
- Walls upholstered in Poltrona Frau leather

◆ LOWER DECK

LOBBY

- Ceiling LED lights with indirect lighting
- Ceiling with vinyl fabric panels

- Doors upholstered in leather
- Mirror (2)
- Soft touch switch plates
- Step marker spot lights (4)
- Structural GRP floor covered with carpet and wood frame
- Walls covered in wallpaper
- Walls with cut-in recesses covered in wood

VIP CABIN

- Audio-video system
 - LCD TV 24"
 - Loudspeakers (2)
 - Mini Hi-fi CD/DVD
 - Preparation for decoder: cable 120V, F connector, TV sat antenna cables
- Blind compartments covered in laminated and vinyl
- Blinders for hatchway
- Ceiling LED lights with indirect lighting
- Ceiling with lacquered ceiling frame and panels upholstered in vinyl fabric
- Digitally controlled A/C system
- Dimmer
- Double bed in wood with headboard upholstered in leather and locker underneath
 - Mattress, pillow and bedcover
- Fixed side windows in stratified crystal with opening porthole in stainless steel with mechanic hook
- Intercom cordless system
- Light stripe underneath the bed
- Manual roll curtains in fabric
- Mirror at fore bulkhead
- Reading lights (2)
- Soft touch switch plates
- Structural GRP floor covered in moquette
- TV wall lined with Frau sole leather
- Walls covered in wood
- Wardrobe in wood, with clothes rack, internal light
- Wood nightstand (2) with sole leather on top
- Wooden door
 - Door handles

VIP BATHROOM

- A/C system outlet
- Aluminium Venetian blinds
- Blind compartments covered in laminated and vinyl
- Ceiling LED lights with indirect lighting
- Clothes hook (2)
- Combined washbasin faucet
- Electric WC in ceramic
- Lacquered cabinet with door
- Lacquered ceiling
- Mirror
- Opening portholes in stainless steel with mechanic hook

- Parquet floor
- Shower box covered with standard laminate and tempered glass
 - Shower faucet and pole
 - Shower floor in Corian
- Soft touch switch plates
- Toilet brush holder
- Toilet roll holder
- Towel rail
- Walls covered in laminate
- Wash basin in white ceramic on furniture
- Washbasin unit in wood with doors
- Wooden door
 - Door handles
 - Door stops

DOUBLE GUEST CABIN (2)

- Audio-video system
 - LCD TV 24"
 - Loudspeakers (2)
 - Mini Hi-fi
 - Preparation for decoder: cable 120V+F connector+TV sat antenna cables
- Blind compartments with vinyl finishing
- Ceiling LED lights with indirect lighting
- Ceiling with lacquered ceiling frame and panels upholstered in vinyl fabric
- Digitally controlled A/C system
- Dimmer
- Intercom cordless system
- Light stripe underneath the bed
- Manual roll curtains in fabric
- Mirrors at aft bulkhead
- Opening porthole in stainless steel with mechanic hook (2)
- Reading lights (2)
- Single bed in wood with head upholstered in Frau leather (2)
 - Mattress, pillow and bedcover
- Soft touch switch plates
- Structural GRP floor covered in moquette
- TV wall lined with Frau sole leather
- Walls covered in wood
- Wardrobe covered in wood, with clothes rack, internal light and inside mirror (1)
- Wood nightstand with sole leather top
- Wooden door
 - Door handles

GUEST BATHROOM/DAY HEAD

- A/C system outlet
- Aluminium Venetian blinds
- Blind compartments with laminated

- Ceiling LED lights with indirect lighting
- Clothes hook
- Combined washbasin faucet
- Curtain compartment
- Electric WC in ceramic
- Lacquered cabinet with door (1)
- Lacquered ceiling
- Mirror
- Opening portholes in stainless steel with mechanic hook
- Parquet floor
- Shower box covered with standard laminate and tempered glass
 - Shower faucet and pole
 - Shower floor in Corian
- Shower soap dispenser
- Soft touch switch plates
- Toilet brush holder
- Toilet roll holder
- Towel rail
- Walls covered in laminate
- Wash basin in white ceramic on furniture
- Washbasin unit in wood with doors
- Wooden door (2), one covered with sole leather on one side
 - Door handles (2)

MASTER CABIN

- Access to the cabin through a stairway with wood steps
- Audio-video system
 - Hi-Fi surround 2+1 system (60Hz) sintoamplifier with blu-ray
 - Preparation for decoder: cable 120V, F connector, TV sat antenna cables
 - Retractable TV LCD 32"
 - Touch screen remote control
- Blind compartments with vinyl finishing
- Ceiling LED lights with indirect lighting
- Ceiling with lacquered ceiling frame and panels upholstered in vinyl fabric
- Digitally controlled A/C system
- Dimmer
- Double bed in wood with headboard and bed border upholstered in Poltrona Frau leather, underneath locker and drawers
- Electric black out rolls curtain
- Electric roll curtains in master cabin
- Entrance cabin ceiling with wood ceiling frame and light panel
- Fixed side windows in stratified crystal with opening porthole in stainless steel with mechanic hook
- Furniture unit with fridge in wood with opening doors
- Handrail lined with Frau sole leather

- Hideaway vanity unit upholstered in Poltrona Frau leather
- Hi-fi furniture in wood
- Intercom cordless system
- Light stripe underneath the bed
- Mattress, pillow and bedcover
- Mirrors at aft bulkhead
- Ottomans in Poltrona Frau leather
- Reading lights (2)
- Safe
- Soft touch switch plates
- Stern bulkhead sound insulation
- Structural GRP floor covered in moquette
- Walls covered in wallpaper
- Walls covered in wood
- Wardrobe covered in wood, with clothes rack, dresser and internal light
- Wood nightstand covered with Poltrona Frau leather (2)
- Wooden door
 - Door handles
 - Door stops

MASTER BATHROOM

- A/C system outlet
- Bidet in ceramic
- Blind compartments covered in laminated
- Ceiling LED lights with indirect lighting
- Clothes hook (2)
- Combined bidet faucets
- Combined washbasin faucet
- Digitally controlled A/C system
- Electric black out rolls curtain
- Electric roll curtains in master cabin
- Electric WC in ceramic
- Fixed side windows in stratified crystal with opening porthole in stainless steel with mechanic hook
- Glass door matt finishing
- Lacquered ceiling
- Parquet floor
- Shower walls covered with mosaic and tempered glass door
 - Mirror
 - Mosaic shower plate
 - Object holder inside shower
 - Shower faucet
 - Showerhead
- Sliding mirror
- Soft touch switch plates
- Toilet brush holder
- Toilet roll holder
- Towel rail
- Walls covered in wood
- Wash basin
- Washbasin unit in wood with doors

◆ CREW AREA

GALLEY

- Audio-video system
 - LCD TV 24"
 - Loudspeakers (2)
 - Mini Hi-fi CD/DVD
 - Preparation for decoder: cable 120V, F connector, TV sat antenna cables
- Built in ceiling spotlight (8)
- Ceiling with lacquered ceiling frame and panels upholstered in vinyl fabric
- Ceramic glass hob with 4 burners
- Digitally controlled A/C system
- Dishwasher for 12 people
- Electric oven
- Electrical panel
- Extractable faucet
- Extractor fan 60 Hz
- Fridge unit side by side with fridge and freezer 60Hz
- Galley top in coloured tempered glass
- Hanging lockers in unsealed oak wood and internal shelves
- Intercom cordless system
- Light underneath shelves (3)
- Openable table
- Ottoman upholstered in vinyl fabric
- Parquet floor
- Rubbish bin
- Sofa upholstered in vinyl fabric
- Soft touch switch plates
- Stainless steel washbasin
- Under top unit furniture with ivory lacquered opening doors, internal shelves and drawers
- Walls covered with std laminate and panels upholstered in vinyl fabric
- Wooden door
 - Door handles
 - Door stops

CAPTAIN'S CABIN

- Audio-video system
 - Loudspeaker (2)
 - Mini Hi-fi
 - Preparation for TV: cable 120V, F connector, TV antenna cables
- Built in ceiling spotlight (2)
- Ceiling with lacquered ceiling frame and panels upholstered in vinyl fabric
- Digitally controlled A/C system
- Interior ivory lacquered door
 - Door handles
 - Door stops
- Light switches
- Locker with lacquered doors
- Opening portholes in stainless steel with mechanical hook
- Parquet floor
- Reading lights
- Safe

- Single bed
 - Mattress, pillow and bedcover
- Walls covered with std laminate and panels upholstered in vinyl fabric
- Washing machine

DOUBLE CREW CABIN

- Audio-video system
 - Loudspeaker (2)
 - Mini Hi-fi
 - Preparation for TV: cable 120V, F connector, TV antenna cables
- Built in ceiling spotlight (2)
- Ceiling with lacquered ceiling frame and panels upholstered in vinyl fabric
- Digitally controlled A/C system
- Light switches
- Locker with ivory lacquered door with clothes rack
- Opening portholes in stainless steel with mechanical hook
- Parquet floor
- Reading lights (2)
- Single bed (2)
 - Mattress, pillow and bedcover (2)
- Walls covered with std laminate and panels upholstered in vinyl fabric

CREW BATHROOM

- Built in ceiling spotlight (3)
- Clothes hook
- Combined washbasin faucet
- Electric WC in porcelain
- Interior ivory lacquered door
 - Door handles
- Laquered ceiling
- Light switches
- Mirror
- Opening portholes in stainless steel with mechanical hook
- Parquet floor
- Shower box in std laminate with tempered glass door
 - Shower faucet and pole
- Toilet brush holder
- Toilet roll holder
- Towel rail
- Walls covered with std laminate and panels upholstered in vinyl fabric
- Washbasin unit ivory lacquered with GRP top with doors

◆ TECHNICAL AREA

ENGINE ROOM

- A/C unit
- Access to the engine room
 - Light alloy waterproof door
- Air compressor 240V-60Hz
- Air intakes (2)
- Coupling joint between adaptor and TS flange (2)

- Diesel engine MTU 16V 2638 mhp (2)
- E/pump A/C
- Electric extractor (2)
- Engine exhaust muffler (2)
- Engine room pillars (2)
- Floor covered with anti slip aluminum
- Generator manifold and gas separator (2)
- Generator prefilter single type racor (2)
- Genset 21.5kW-120/240V 60Hz (2) main+auxiliary
- Hydraulic oil heat exchanger
- Hydraulic steering oil tank
- Hydraulic unit for gangway, swim ladder, garage hatch, sun deck stair and aft door
- Hydraulic unit for platform, trims, trim tabs and steering
- Light alloy waterproof door
- Light switch
- Protective cover added to coupling
- Stainless steel engine exhaust raiser (2)
- Thermal acoustic insulation
- Waterproof camera interfaced with bridge
- Waterproof fixed explosion-proof neon light (6) and led strip (3)

PROPULSION AND MANEUVERING EQUIPMENT

- Hydraulic bow thruster
- Hydraulic steering
- Hydraulic trim tabs (2)
- Nickel - Aluminium - Bronze surface propeller 6 Blades (2)
- Surface drive system with automatic trim

◆ SYSTEMS

FRESH WATER SYSTEM

- Boiler 30lt - electric (2)
- Fresh water inlet from water tank
- Fresh water outlet in engine room
- Fresh water pump with autoclave (2 - one at 24V, one at 230V-60Hz)
- Independent sea water intake for water maker with filter
- Level sensor
- Shore fresh water intake with pressure regulator
- Structural GRP main tank (1200lt)
- Watermaker 142l/h

SEA WATER SYSTEM

- By-pass valve for emergency bilge discharge from engines (2)
- Dynamic seawater intake (2)

- Fire extinguishing and chain wash e/pump
- Fresh water pump with autoclave American version
- Sea water basket filter for engines, power generators, A/C pumps, services and fire extinguishing system (5)
- Seawater outlet for chain wash and fire extinguishing in forward locker
- Static seawater intake (3)

GREY WATER SYSTEM

- E/pump auxiliary tank discharge
- E/pump main tank discharge
- Level sensor
- Manifold by-pass for emergency grey and black water pump discharge
- Polyethylene tank (300 lt)
- Valve 3 way in galley

BLACK WATER SYSTEM

- Black water tank: deck connection for tank pumping out
- E/pump tank discharge
- Level sensor
- Polyethylene tank (300lt)

FIRE EXTINGUISHING SYSTEM

- Automatic/manual system in the engine/room and system area FM200 Fire Boy
- Emergency engine shut down remote control
- Fire extinguishing system and alarm activation remote control
- Manual powder extinguisher 2 Kg in engine room
- Manual powder extinguishers 1 Kg (1 for each room)
- Manual powder extinguishers 6 Kg (1 in the cockpit)
- Smoke detectors: salon, galley, cabins (4), crew cabin (2)

AIR CONDITIONING SYSTEM

- Air Conditioning American version (outlet in the bathrooms included, 152.000 btu)

ELECTRICAL SYSTEM

- Battery charger Engines
- Battery charger for generators (from services batteries)
- Breaker box for American shore power
- Earthing system all along the hull joined to the anodes protection (zincs) on the transom
- Electric panel
 - Voltage measuring instruments 24V/230V

- Emergency parallel connection between service batteries and engine starter
- Engine starter battery (4)
- Equipment power modification to 60HZ
- Ground connection for sea water intake and railings
- Ground fault interrupters 120V 6mA in all heads, galley and engine room
- Inverter 60Hz/120V (for the galley fridge only)
- Isolation transformer (25kVA)
- Main electric panel with magneto-thermic switches
- MTU electronic LCD digital panels for engine control (2)
- Parallel connection between generators battery
- Power generator starter battery (2)
- Service battery (12)
- Services battery charger
- Shore power socket 100A 60Hz
- Shore socket and loose cable
- Socket American type 120V, double in each box
- Switch off battery
- Pershing set bath towel (8)
- Pershing towel set (8)
- Safety hooks
- Spherical fender with line and cover (2)
- Telescopic boat hook
- Warning labels
- Weather station: clock, barometer, thermometer

FUEL SYSTEM

- Electronic fuel level remote indicator in dashboard
- Fuel decanter filter (2)
- Fuel sight gauge
- Manual fuel discharge/load drainage pump
- Structural GRP tank 5950l

BILGE SYSTEM

- Automatic/manual immersion E/pump for bilge discharge in each watertight compartment with level sensor
- E/pump with valve system for the separated or joint bilge system centralized suction
- Emergency engine room bilge system discharge through engines intake suction

◆ EQUIPMENT

- Bag with logo (3)
- Bed sheets, complete set
- Black mooring line Ø 26 mm (4 x 25m); Ø 8 (1x 20m)
- Cylindrical fender with line and cover (8)
- Diurnal navigation shapes mast
- Electrical manual for American version
- Floating luminous buoy
- Life jacket (12)
- Life raft compliant to American requirements (2x8)
- Life saver with floating line
- Means of unassisted reboarding
- Model indication plate XFA
- Owner manual for American version



This document shall not constitute in any circumstances whatsoever any offer by the shipyard to any person or be incorporated into any contract.

Any and all information contained in this document, including without limitation all technical data, performance, illustrations and drawings, are not contractual and refer to European standard models of motor yachts built by the shipyard and have been up-dated by the shipyard as of the date of issue of this document. The only valid technical reference or description is the specific parameters of each motor yachts cited only on purchase of the same. Therefore the only indications binding on the seller are contained solely in the sale agreement. This document is based on information available at the date of issue. Notwithstanding all efforts to insure accuracy, the information contained in this document may not cover all details, subsequent changes, not accurately foresee or report all possible scenarios. The shipyard reserves the right to modify its motor yachts and to substitute the manufacturers and/or the suppliers of any component and/or system and/or equipment due to product changes and/or improvements and/or availability of supply, changes in laws and/or regulations applicable, technology, know-how, provided that any substituted component and/or system and/or equipment of the motor yachts shall be of equivalent or superior quality to that shown in this Brochure. Displays, photos, schemes, designs or examples contained in this document are solely and exclusively reproduced to highlight the information contained. Due to the different characteristics of each yacht, the shipyard declines any and all liability for any use thereof on the basis of the information contained in this document.

This document and its contents may not be copied or reproduced and may not be modified or altered, in whole or in part.

The sale of this document and its contents is prohibited and no admitted.

Images may contain optional equipment or accessories, so do not necessarily comply with standard configuration.



PERSHING

STAND OUT

PERSHING-YACHT.COM

FERRETTI GROUP AMERICA LLC
1445 S.E. 16TH STREET - FORT LAUDERDALE, FLORIDA 33316 USA
PH. +1954 4625527 - FAX +1954 4625563