

Custom Line 120'



CUSTOM LINE

BEYOND THE LINE

Custom Line 120'



CUSTOM LINE

BEYOND THE LINE

Beyond the line.

Some people stop at the superficial;
we strive to go beyond.

Because only those who cruise
know where to find the sublime:
Beyond the surface.

Beyond the Line.

See another sea with
the **Custom Line 120'**.

A reflection of the owner's personality,
she's more than a yacht;
she's a unique masterpiece.
Because cruising is an art.
The art of being different.



Some
people see
a wake;



we see
a masterpiece.







High-performance yachts for those who want **the power and pleasure** of expressing themselves out on the waves.





Speed

25 knots

maximum speed

21 knots

cruising speed

1100 nm

range at 11 knots

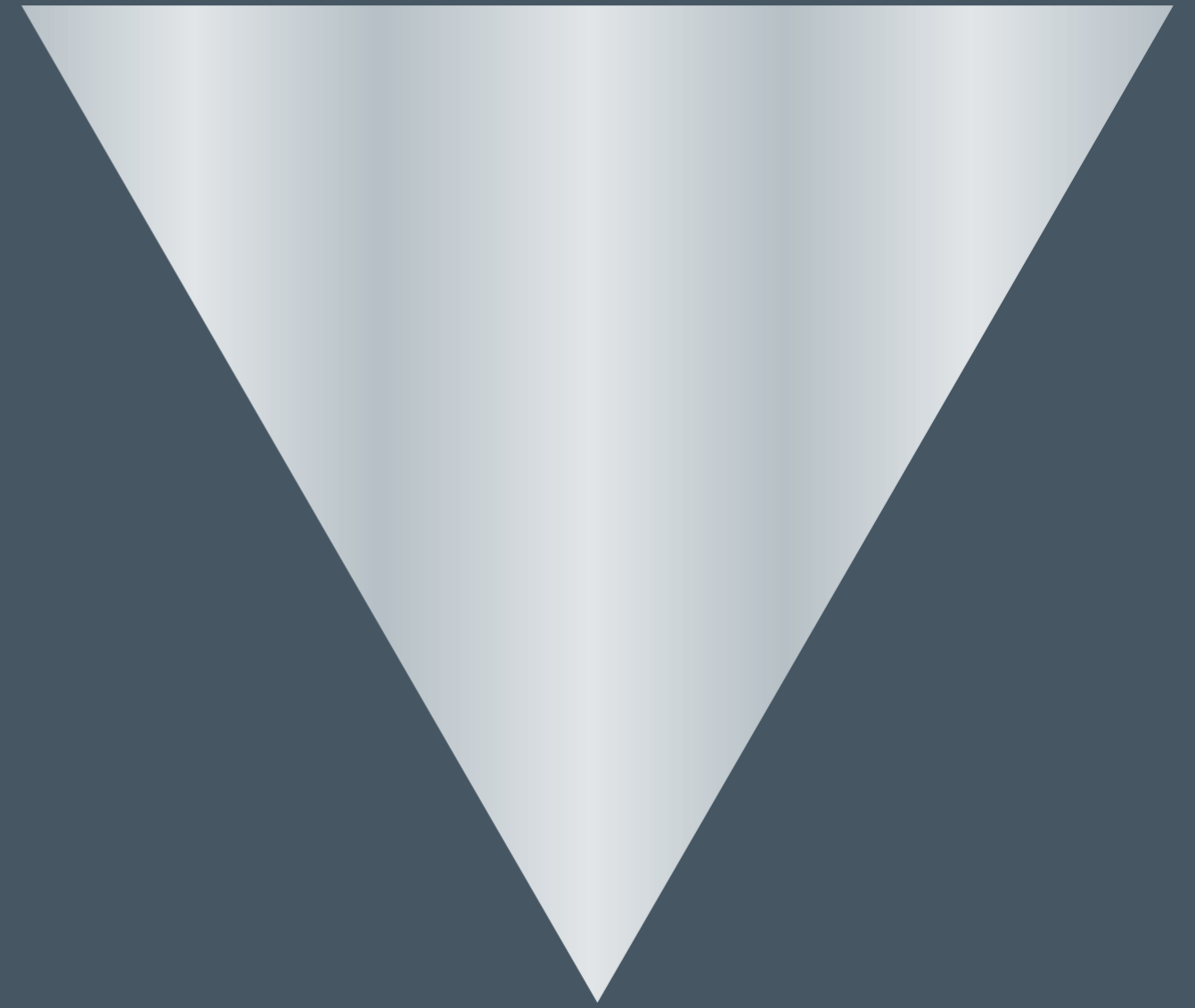
An array of navigation systems to free your mind and let your spirit soar on the high seas.



The art of cruising
comes to life with
the Custom Line 120'
maxi yacht.



**Some
people see
a mirror;**



we see a unique
creation.





Dimensions

38.36 meters

overall length

7.65 meters

maximum beam

270

gross tonnage

There are palatial spaces
for everything from carefree
fun to well-earned privacy.

Beyond the harmony of the Line,
beyond expectations.
A true **yachting masterpiece**.







A tailor-made Line.
A Line **to live intensely.**



120': the shortest distance
**between the sea and
your dreams.**



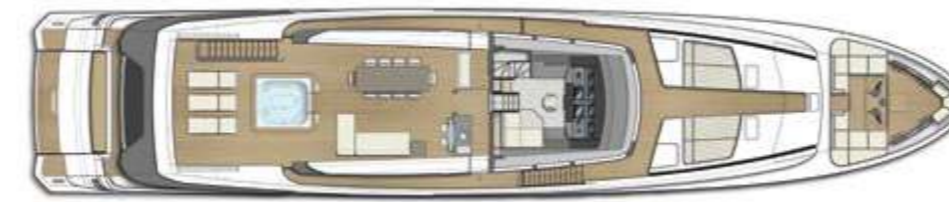




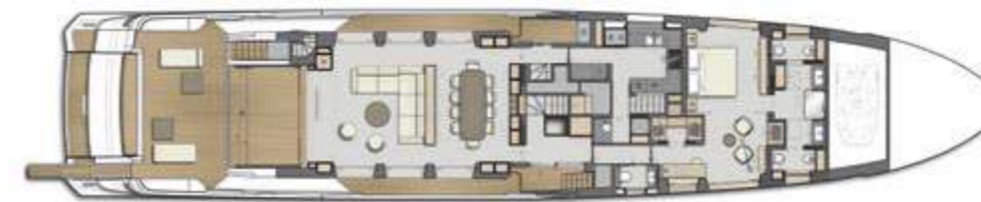
Fly Bridge



Raised Pilot House



Main deck



Lower deck



Custom Line 120'

ENGINES

2 x MTU 16V 2000 M96L power 2638 mhp / 1939 kW at 2450 rpm

SPEED (knots) (ref. Performance Specifications)

Maximum speed	knots	25
Cruising speed	knots	21
Economic cruising speed	knots	11

RANGE (nautical miles) (ref. Performance Specifications)

Maximum speed	nm	360
Cruising speed	nm	420
Economic cruising speed	nm	1100

TECHNICAL DATA

Loa = Overall length (standard ISO 8666)	38.36	m/ft. in.	125'10"
Lh = Hull length (standard ISO 8666)	38.36	m/ft. in.	125'10"
Lwl = Waterline length (boat fully laden)	31.40	m/ft. in.	103'0"
Maximum beam	7.65	m/ft. in.	25'1"
Depth under propellers (boat fully laden)	2.13	m/ft. in.	7'0"
Displacement unladen	150.00	t/lb	330693
Displacement laden	175.00	t/lb	385809

Maximum number of persons on board	20
------------------------------------	----

Classification	RINA Class Certificate for Pleasure Yachts, C # Hull, • MACH, Y, Unrestricted Navigation
----------------	--

Hull type: warped hull with spray rails and aft deadrise 12°			
H = Overall height from keel to hard top	11.48	m/ft. in.	37'8"
Ht = Minimum transport height from keel	9.22	m/ft. in.	30'3"
Fuel tank capacity (daily tank included)	16300	lt./US gals.	4306
Water tanks capacity	3000	lt./US gals.	793

PERFORMANCE SPECIFICATIONS

The performance is estimated under the following conditions: standard version displacement of the yacht at half liquid load, clean hull, 25°C air temperature, good weather conditions, 10 persons on board.	159.30	t/lb	351298
--	--------	------	--------

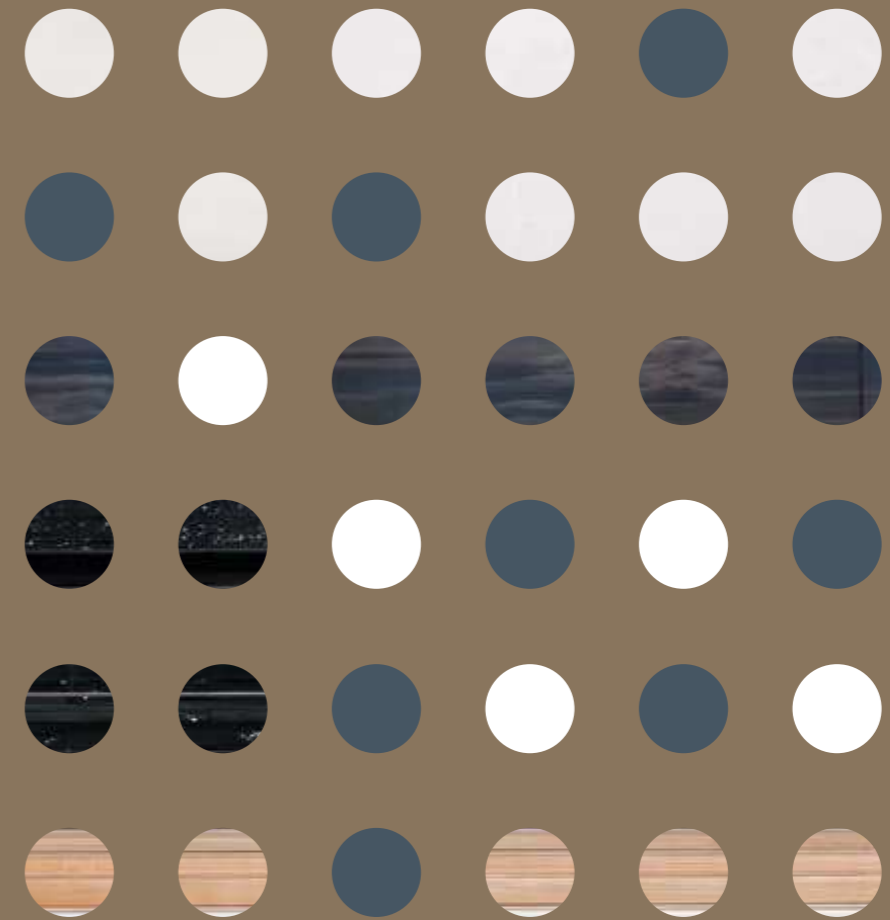
Overloading the yacht by	6.0	t/lb	13228
top speed decreases of	1	knot	

Hull and propulsion design: Ferretti Group Engineering.
Superstructure and Interiors design: Studio Francesco Paszkowski Design.

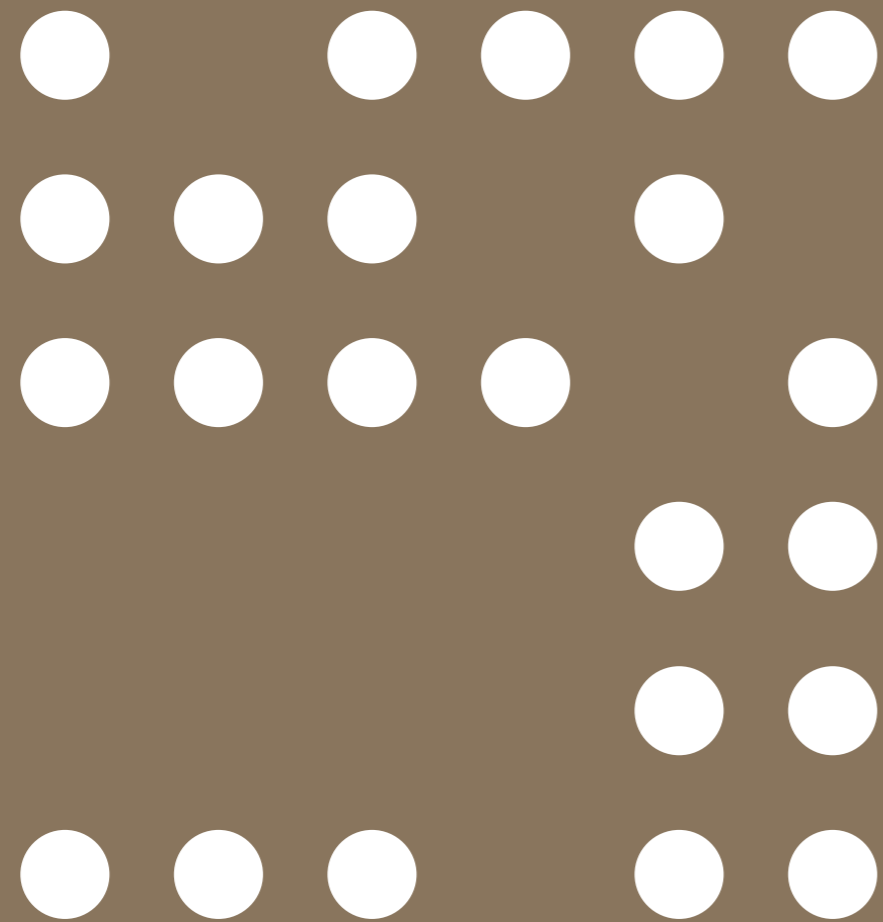


A new Line
on the horizon,
a new story
about to begin.

Some
people see
circles;



we see an incredible painting.





From creativity to creation.
Experience the sea through
widescreen windows.







From the main deck,
lose yourself in
**the glittering infinity
of the sea.**

Traveling attracts.
Cruising captures the heart.





Amazing panoramic views

1

innovative large glass door on the main deck

3

decks with numerous hull windows and floor-to-ceiling windows

360°

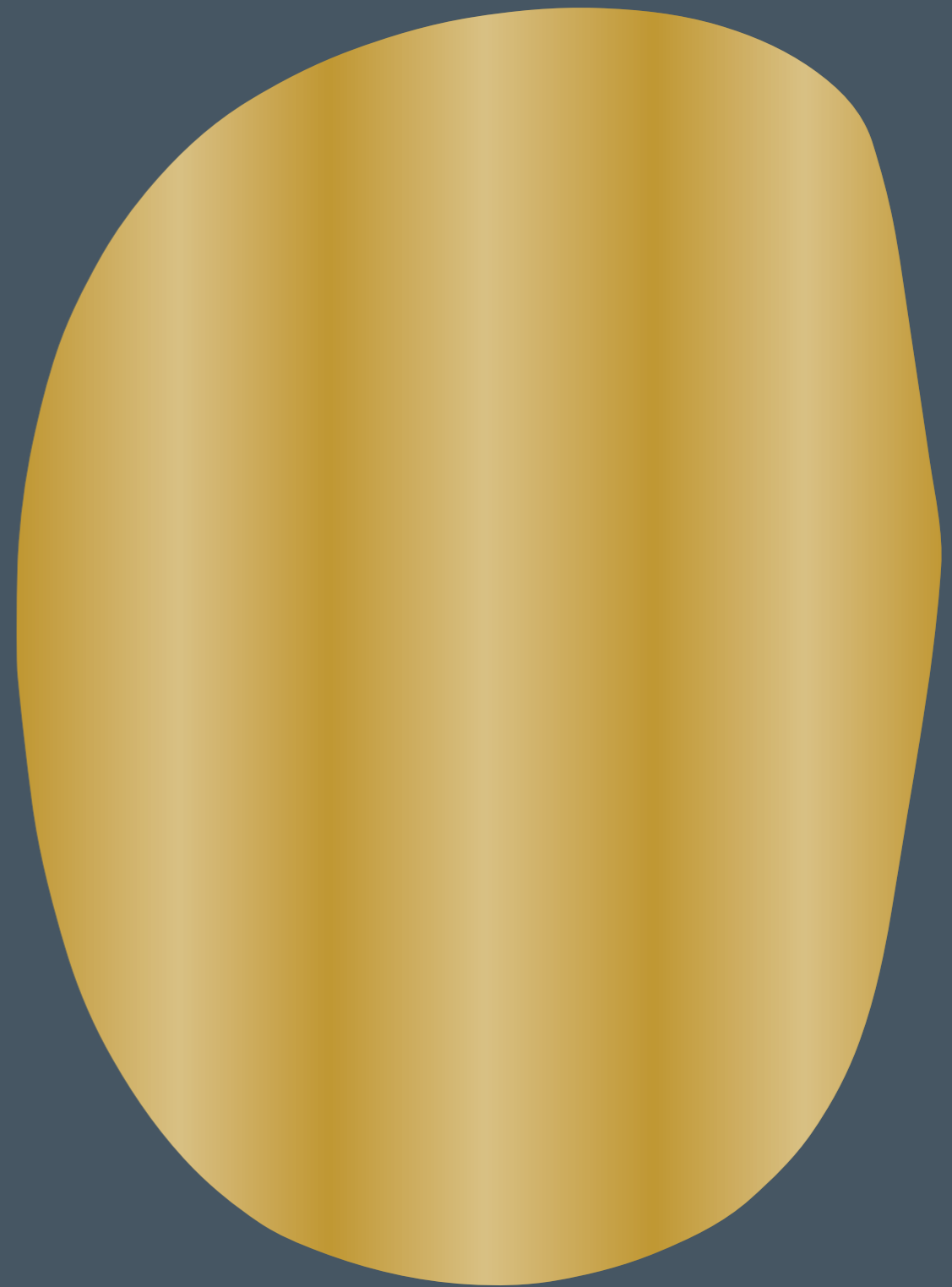
view

See another sea, from the wraparound windows.

She's not just different.
She's **one of a kind.**



**Some
people see
a shape;**



we see a fantastic
sculpture.





Beyond the Line,
beyond the sea,
beyond the blue.





Like a modern high-tech art installation – **a masterpiece**, unique and unforgettable.



Key features

Innovative glass door angled at

45°

to create a single space spanning
more than

80

sqm

1

unique lounge floor commanding
unparalleled views of the sea

1

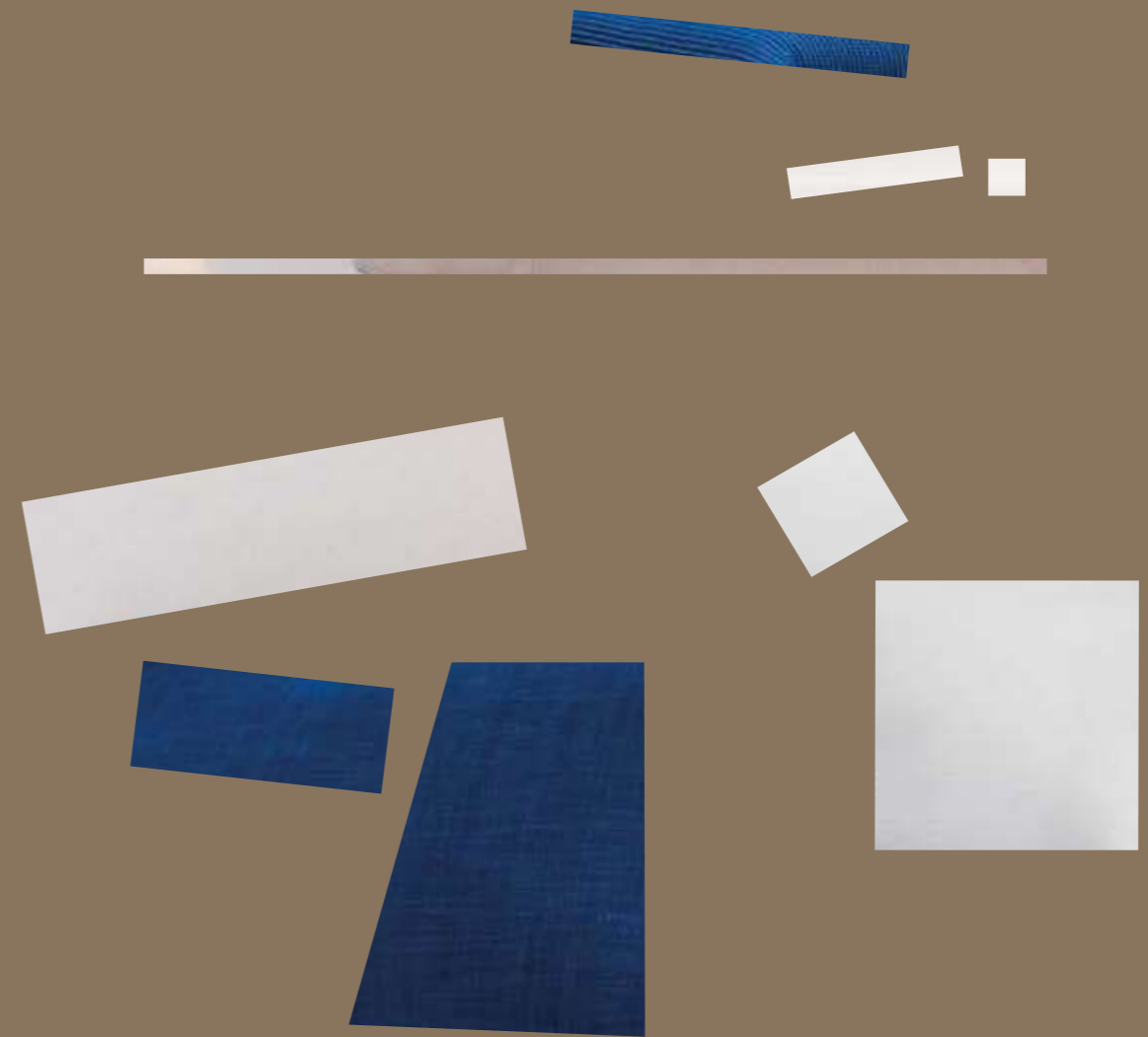
floodable float-in garage

Advanced technology
for spectacular cruising
in complete safety.





Some
people see
offcuts;



we see
a work of art.





Outdoor and indoor interior design

35 sqm

spacious owner's suite

4

VIP / guest cabins

1

beautiful outdoor lounge area

World-class craftsmanship
and tailor-made service
bring your dreams to life.







A journey to savor,
an experience to share.





Spacious rooms of exquisite beauty.
Spaces with a story to tell.













Every detail is customizable.
Every detail is an **expression of you.**







PASSION

The sea is our passion. Ferretti Group has been a world leader in the design, construction and sale of luxury motor yachts since 1968. We have created an industrial hub and consolidated it by acquiring and integrating several unique, highly complementary brands. Ferretti Group people share values such as an endless quest for quality, a passion for technology and exclusive design, a consummate sense of comfort and impeccable attention to detail. For half a century, we have put our heart and soul into designing and building increasingly innovative yachts that are high-tech, high-performance and totally safe. And the results are there for all to see – in the beauty, elegance and sophistication of Ferretti Group's creations, products of the special bond between man and the sea.

Il mare è la nostra passione. Da 50 anni Ferretti Group è tra i leader mondiali nella progettazione, costruzione e commercializzazione di motor yacht di lusso. Merito della creazione di un polo industriale, consolidato attraverso l'acquisizione e l'integrazione di marchi con caratteristiche uniche ma fortemente complementari. Le persone di Ferretti Group condividono valori come la continua ricerca della qualità, la passione per la tecnologia e il design esclusivo, oltre che il gusto del comfort e la cura per i dettagli. Dal 1968 l'azienda ha dedicato ogni risorsa alla realizzazione di imbarcazioni sempre più innovative, performanti, tecnologiche e sicure. L'esito felice di questa strategia è tutto nella bellezza e nella raffinata eleganza delle imbarcazioni Ferretti Group, elemento di unione privilegiata tra l'uomo e il mare.

INNOVATION

Perennial leaders in the global nautical scene, Ferretti Group is consistently committed to product and process innovation and to pushing back the boundaries of technology. State-of-the-art projects supported by significant investment and excellent facilities are the cornerstone of the Group's research and development effort. Our wide range of yachts – flybridges, runabouts, opens, coupés, lobster boats, maxi and mega-yachts – has been conceived by the Group's Strategic Product Committee, the Marketing Department and the Engineering Department. The aim is to devise ingenious aesthetic and functional solutions while working closely with internationally renowned architects and designers, with the ultimate goal of consolidating Ferretti Group's leading position as pioneering innovators.

Da sempre all'avanguardia nello scenario nautico mondiale, Ferretti Group si impegna costantemente nell'innovazione di prodotto, di processo e nella realizzazione di un continuo progresso in campo tecnologico. Lo studio di progetti innovativi, insieme a elevati investimenti e strutture adeguate, è l'asse portante dell'attività di ricerca e progettazione del Gruppo. L'ampia gamma di imbarcazioni (flybridge, runabout, open, coupé, lobster boat, maxi e mega-yacht) è concepita dal Comitato Strategico di Prodotto, dal dipartimento Marketing del Gruppo e dalla Direzione Engineering. L'obiettivo è sviluppare soluzioni estetiche e funzionali innovative, lavorando anche in stretta collaborazione con architetti di fama internazionale. Per consolidare il primato di Ferretti Group anche nel settore dell'innovazione.

EXCELLENCE

Excellence is a standard that has always run deep in the Ferretti Group psyche. This determination to keep improving has been key to managing and growing a fleet that vaunts some of the nautical world's most exclusive and prestigious brands: Ferretti Yachts, Pershing, Itama, Riva, Mochi Craft, CRN and Custom Line. Each one reflects the expertise and craftsmanship that are the hallmarks of the most advanced Italian products. Ferretti Group harmoniously weaves each brand's distinctive features with the values and best practices that unite them all. Tradition and innovation, beauty and amenity are defining features of all the Group yachts – shining examples of nautical artistry that consistently attract new owners and enthusiasts. Ferretti Group is forging ahead every day, consolidating an excellent reputation built on refined design, superior materials, cutting-edge technologies and attentive, timely service.

L'eccellenza è uno standard che Ferretti Group ha da sempre nel DNA. Solo con questa determinazione a migliorare sempre si può gestire e far crescere una flotta che comprende alcuni marchi tra i più esclusivi e prestigiosi della nautica mondiale: Ferretti Yachts, Pershing, Itama, Riva, Mochi Craft, CRN e Custom Line. Ognuno di essi esprime il sapere fare e l'artigianalità tipici del Made in Italy più evoluto. Ferretti Group coniuga armonicamente le peculiarità di ogni marchio con i valori e le best practice condivise. Tradizione e avanguardia, bellezza e funzionalità contraddistinguono tutte le imbarcazioni del Gruppo, facendone esempi di arte nautica che conquistano ogni giorno nuovi armatori e nuovi appassionati. L'eccellenza di Ferretti Group si rafforza costantemente grazie alla ricercatezza nel design, a materiali della miglior qualità, tecnologie innovative, servizi accurati e puntuali.

LEGAL NOTICE

1. This brochure does not constitute an offer by the shipyard to any person under any circumstances whatsoever, nor may it be incorporated into any contract.

2. All the information in this brochure, including without limitation all technical and performance data, illustrations and drawings, has no contractual effect. That information refers to European standard models of motor yachts built by the shipyard and is accurate at the brochure's date of issue. The only valid technical description or reference content for an individual motor yacht is the exact specification stated at the time of purchase. Therefore, the only information that is binding on the seller is that contained in the sale agreement and associated manual. This brochure is based on information available at the date of issue. Notwithstanding Ferretti Group's best efforts to ensure accuracy, the information in this brochure may not cover all details or subsequent changes, nor does it claim to accurately foresee or detail all possible scenarios. Displays, photos, diagrams, designs or examples in this brochure are reproduced solely and exclusively to highlight the information contained. Each yacht is different, so the shipyard declines any and all liability for any use thereof on the basis of the information in this brochure.

3. The brochure and its contents must not be copied or reproduced in their entirety or in part.

4. Sale of this brochure is not permitted.

Technical drawings:

Studio Francesco Paszkowski Design
Ferretti Group Engineering

Concept and art direction:

Armando Testa

FERRETTI S.P.A.

Via Ansaldo, 7 · 47122 – Forlì, Italy
Tel. +39.0543.787.511

FERRETTI GROUP

SUPERYACHT YARD – CUSTOM LINE
Via Enrico Mattei, 26 · 60125 – Ancona, Italy

customline-yacht.com



CUSTOM LINE

BEYOND THE LINE