

Navetta 37

CUSTOM LINE

Navetta 37

CUSTOM LINE

BEYOND THE LINE

Beyond the line.

Some people stop at the superficial;
we strive to go beyond.

Because only those who cruise
know where to find the sublime:
Beyond the surface.

Beyond the Line.

See another sea with
Custom Line **Navetta 37**.

A reflection of the owner's personality,
she's more than a yacht;
she's a unique masterpiece.
Because cruising is an art.
The art of being different.



Some
people see
a cut;



We see
a vision of beauty.





Dimensions

37,04

overall length

8

metres

maximum beam

4

decks

Navetta 37.

A triumph of design,
with her sinuous,
sophisticated lines.





Leave your mark
on the endless canvas
of the sea.





Cruising and travel,
made art with
your Navetta 37.



Some
people see
lines;



we see
an amazing picture.



Where **cruising** and
dreaming become one.
One Line.







Feel the endless
joy of cruising.



Facts & Figures

2

MAN V12 1400 CR engines, developing

1400

Mhp

15,5

knots

maximum speed

12,5

knots

cruising speed

Savour our vision
of dynamism and style.



Experience a unique sensation.
Experience a **unique creation**.





**Some
people see
a mirror;**

we see an incredible painting.





A place to give free rein
to your **imagination.**







Beyond the bounds
of the horizon.



Amazing
panoramic views

360°

Panorama

1

majestic sliding window in the dining room

58

sqm

sundeck with hard top

Admire your own
private vista, every day.





Where the sun **never sets**.





Your own **private world**
to savour and share.







Enjoy the art
of **seeing beyond.**





Key features

Luminous full-height

110 sqm

windows

Generous

476 sqm

on-board spaces, inside and out

Superb features
for a magnificent
cruising experience.



37 shades of **innovation.**



Some
people see
rectangles;



we see
a work of art.



Grand layouts:

41 sqm

main salon

31 sqm

owner's suite

1

fully equipped beach club
with the ocean all around

Feel the pleasure
of customizing your journey.





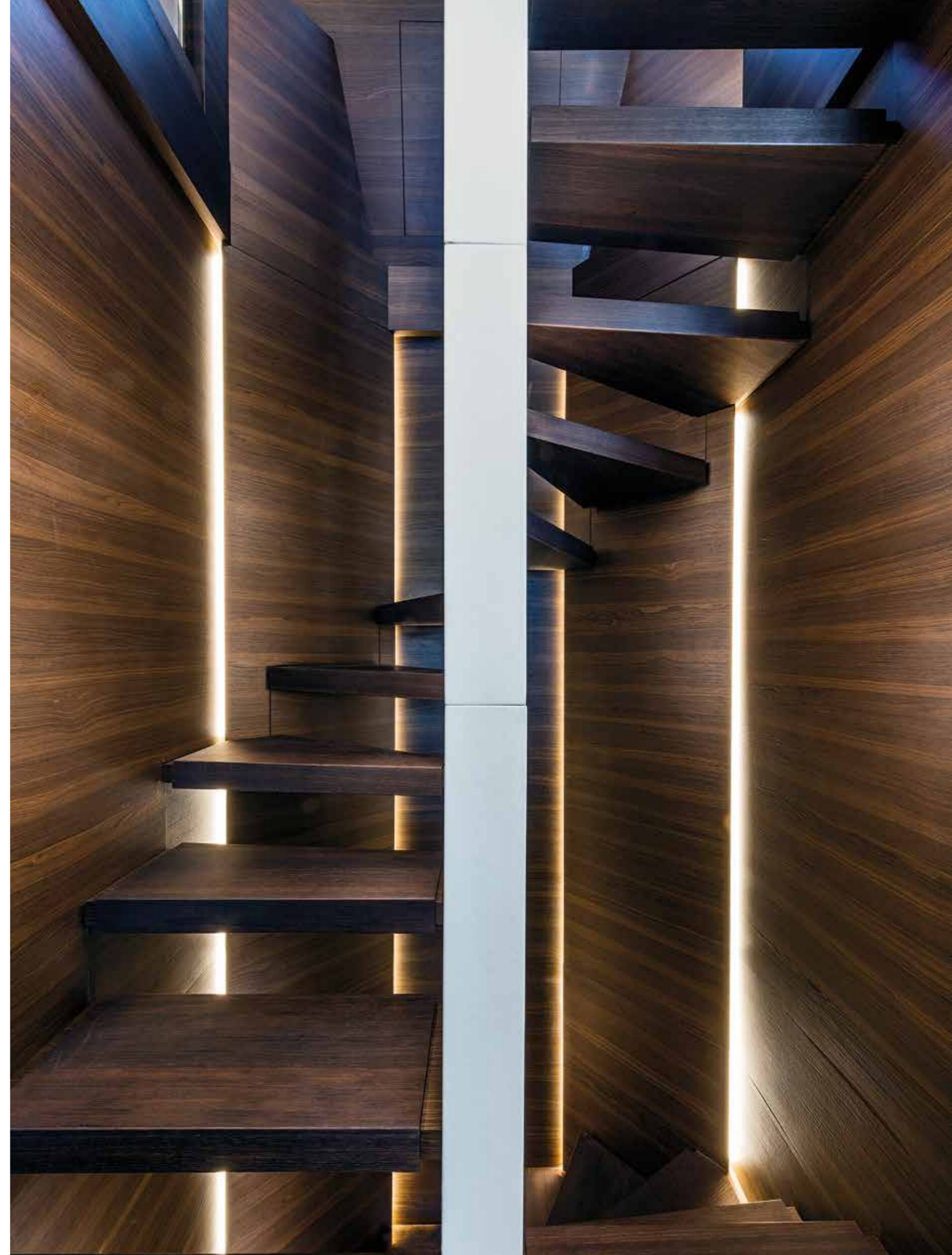
Timeless style
for a timeless journey.





Spaces **inspired by you.**

Every facet of the gem
reflects you.



A **marvel** of cruising comfort to revel in the infinity of the sea.



Dati tecnici

Technical data

Datos técnicos

Технические характеристики

技术规格

البيانات الفنية

MOTORIZZAZIONE			RATING (ORE MAX/ANNO)	
2 x MAN V12 LE446 - 1400 CR potenza 1400 mhp / 1029 kW a 2300 rpm			std	3000h
2 x MAN V12 LE456 - 1650 CR potenza 1650 mhp / 1213 kW a 2300 rpm			opt	1000h
2 x BAUDOUIIN M26.3 P4 - potenza 1650 mhp / 1213 kW a 2300 rpm			opt	1000h
2 x CAT C32 ACERT V12 - potenza 1622 mhp / 1193 kW a 2300 rpm			opt	3000h
VELOCITA' (NODI) (rif. Specifiche di prestazione) (*)	MAN 1400	MAN 1650	Baudouin 1650	CAT 1622
Velocità massima	15,5	16,5	16,5	16,5
Velocità di crociera (massima velocità continuativa)	12	12	12	12
AUTONOMIA (MIGLIA NAUTICHE) (rif. Specifiche di prestazione) (*)	MAN 1400	MAN 1650	Baudouin 1650	CAT 1622
Velocità massima di punta	1010	870	860	870
Velocità massima di crociera	2000	2000	1700	2000
Velocità di crociera economica (10 nodi)	3000	2700	2400	2650
DIMENSIONI PRINCIPALI				
Loa = Lunghezza fuori tutto ISO 8666		37,04	m/ft. in.	121' 6"
Lh = Lunghezza di costruzione ISO 8666		36,89	m/ft. in.	121' 0"
Lg = Lunghezza al galleggiamento (a pieno carico)		30,66	m/ft. in.	100' 7"
Larghezza massima		8,00	m/ft. in.	26' 3"
Immersione sotto le eliche (a pieno carico)		2,27	m/ft. in.	7' 5"
Dislocamento ad imbarcazione scarica e asciutta (*)		185	t/lb	407855
Dislocamento a pieno carico (*)		225	t/lb	496040
Numero massimo di persone imbarcabili				20
Certificazione				RINA S.p.A. *HULL, • MACH, Y, Unrestricted Navigation
DATI CARATTERISTICI				
Tipo di carena: semiplanante a spigolo e chiglia profonda				
H massima = Altezza massima dalla chiglia all'alberotto		11,80	m/ft. in.	38' 9"
H trasporto = Altezza minima per il trasporto dalla chiglia		9,61	m/ft. in.	31' 6"
P = sporgenza poppiera della plancetta		0,15	m/ft. in.	0' 6"
Capacità serbatoio carburante		32500	lt./US gals.	8586
Capacità serbatoi acqua		4000	lt./US gals.	1057
Capacità serbatoio acque nere		1500	lt./US gals.	396
Capacità serbatoio acque grigie		1500	lt./US gals.	396
SPECIFICHE PRESTAZIONALI (*)				
i dati prestazionali sono stabiliti al seguente dislocamento: e si riferiscono alla barca nella versione standard a 1/2 carico liquidi, con carena pulita, temp. 25° C, buone condizioni climatiche e 8 persone a bordo. sovraccaricando la barca di		203,8	t/lb	449201
si ha una perdita di velocità massima pari a		4,0	t/lb	8818
		1	nodo	
Scafo e progettazione di propulsione: Ferretti Group Engineering. Progettazione di sovrastrutture e interni: Zuccon International Project.				(*) PRELIMINARE

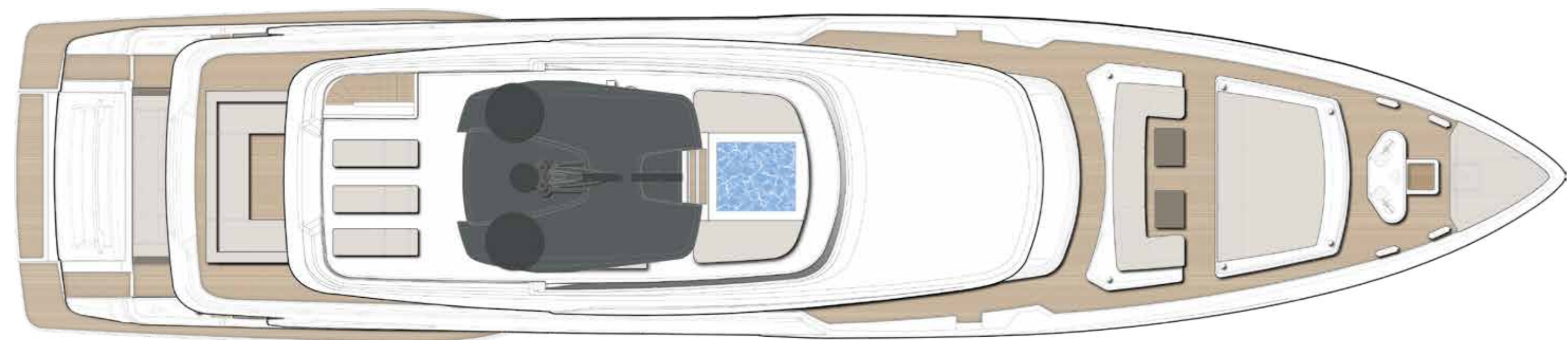


ENGINES			RATING (YEAR MAX H)	
2 x MAN V12 LE446 - 1400 CR power 1400 mhp / 1029 kW at 2300 rpm			std	3000h
2 x MAN V12 LE456 - 1650 CR power 1650 mhp / 1213 kW at 2300 rpm			opt	1000h
2 x BAUDOUIIN M26.3 P4 - power 1650 mhp / 1213 kW at 2300 rpm			opt	1000h
2 x CAT ACERT C32 V12 - power 1622 mhp / 1193 kW at 2300 rpm			opt	3000h
SPEED (KNOTS) (ref. Performance Specifications) (*)	MAN 1400	MAN 1650	Baudouin 1650	CAT 1622
Maximum speed	15,5	16,5	16,5	16,5
Cruising speed (max continuous speed)	12	12	12	12
RANGE (NAUTICAL MILES) (ref. Performance Specifications) (*)	MAN 1400	MAN 1650	Baudouin 1650	CAT 1622
Maximum speed	1010	870	860	870
Cruising speed	2000	2000	1700	2000
Economic cruising speed (10 knots)	3000	2700	2400	2650
MAIN SIZES				
Loa = Overall length (standard ISO 8666)		37,04	m/ft. in.	121' 6"
Lh = Hull length (standard ISO 8666)		36,89	m/ft. in.	121' 0"
Lwl = Waterline length (boat fully laden)		30,66	m/ft. in.	100' 7"
Maximum beam		8,00	m/ft. in.	26' 3"
Depth under propellers (boat fully laden)		2,27	m/ft. in.	7' 5"
Displacement unladen (*)		185	t/lb	407855
Displacement laden (*)		225	t/lb	496040
Maximum number of persons on board				20
Certification				RINA S.p.A. *HULL, • MACH, Y, Unrestricted Navigation
TECHNICAL DATA				
Hull type: semidisplacement hull with hard chine and deep keel				
H = Overall height from keel to radar arch		11,80	m/ft. in.	38' 9"
Ht = Minimum transport height from keel		9,61	m/ft. in.	31' 6"
P = swim platform		0,15	m/ft. in.	0' 6"
Fuel tank capacity		32500	lt./US gals.	8586
Water tanks capacity		4000	lt./US gals.	1057
Black water tank capacity		1500	lt./US gals.	396
Grey water tank capacity		1500	lt./US gals.	396
PERFORMANCE SPECIFICATIONS (*)				
The performance is estimated at the following conditions: standard version displacement of the yacht; at half liquid load, clean hull, 25° C air temperature, good weather conditions, 8 persons on board		203,8	t/lb	449201
Overloading the yacht by		4,0	t/lb	8818
top speed decreases of		1	knot	
Hull and propulsion design: Ferretti Group Engineering. Superstructure and Interiors design: Zuccon International Project.				(*) PRELIMINARY

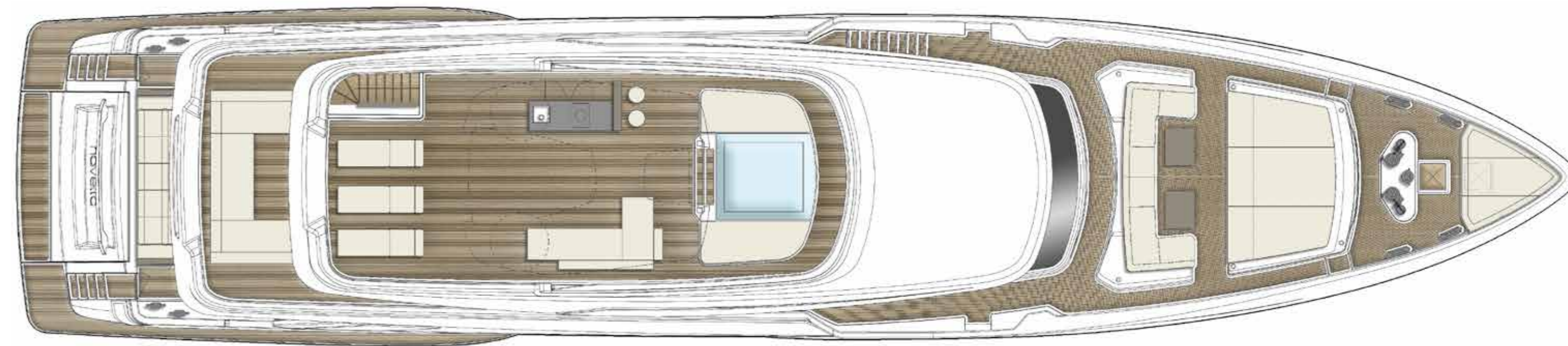
Profile



Top view



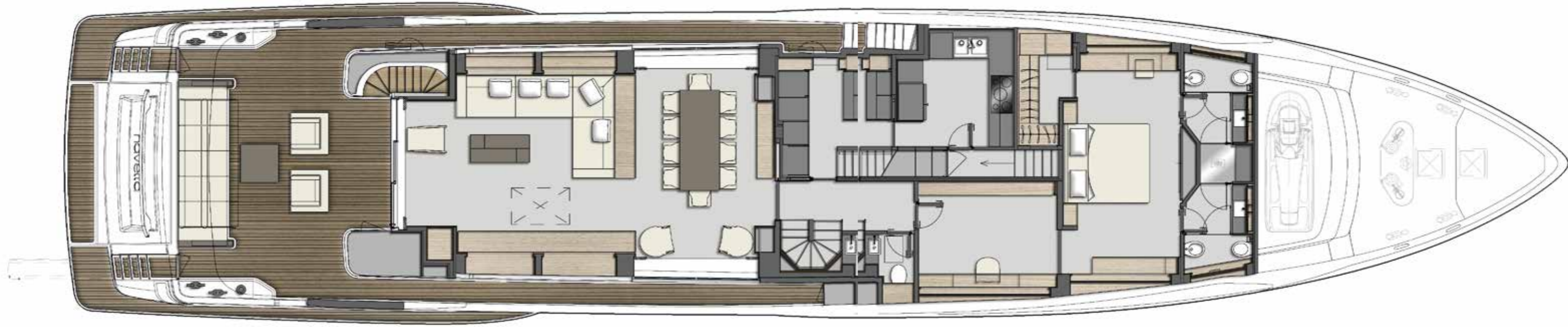
Sun deck



Upper deck



Main deck



Lower deck






FERRETTIGROUP

LEGAL NOTICE

1. This brochure does not constitute an offer by the shipyard to any person under any circumstances whatsoever, nor may it be incorporated into any contract.

2. All the information in this brochure, including without limitation all technical and performance data, illustrations and drawings, has no contractual effect. That information refers to European standard models of motor yachts built by the shipyard and is accurate at the brochure's date of issue. The only valid technical description or reference content for an individual motor yacht is the exact specification stated at the time of purchase. Therefore, the only information that is binding on the seller is that contained in the sale agreement and associated manual. This brochure is based on information available at the date of issue. Notwithstanding Ferretti Group's best efforts to ensure accuracy, the information in this brochure may not cover all details or subsequent changes, nor does it claim to accurately foresee or detail all possible scenarios. Displays, photos, diagrams, designs or examples in this brochure are reproduced solely and exclusively to highlight the information contained. Each yacht is different, so the shipyard declines any and all liability for any use thereof on the basis of the information in this brochure.

3. The brochure and its contents must not be copied or reproduced in their entirety or in part.

4. Sale of this brochure is not permitted.

Technical drawings:

Zuccon International Project
Ferretti Group Engineering

Concept and art direction:

Armando Testa

Photos:

Alberto Cocchi

FERRETTI GROUP SUPERYACHT YARD – CUSTOM LINE

Via Enrico Mattei, 26 · 60125 – Ancona, Italy

customline-yacht.com

CUSTOM LINE

BEYOND THE LINE