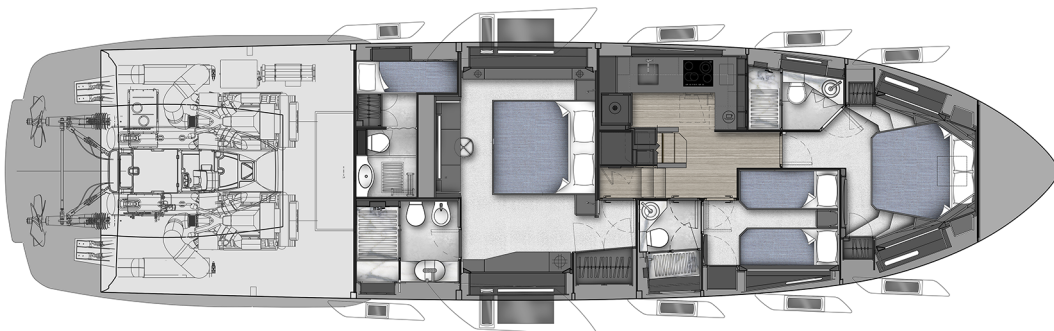
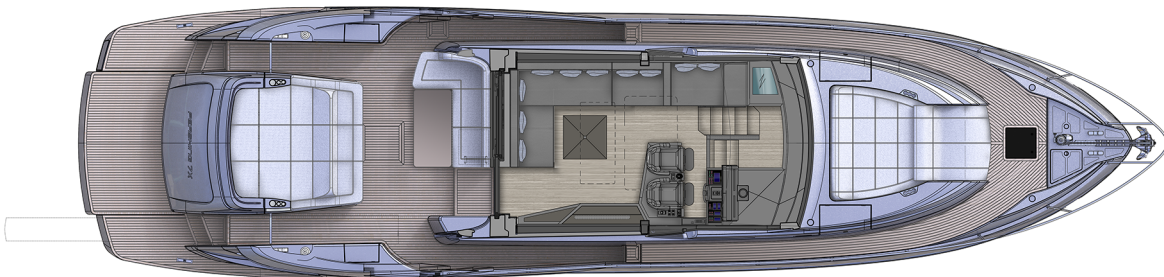
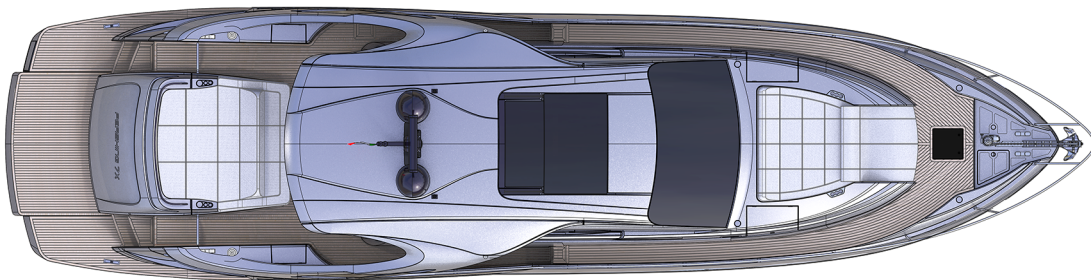
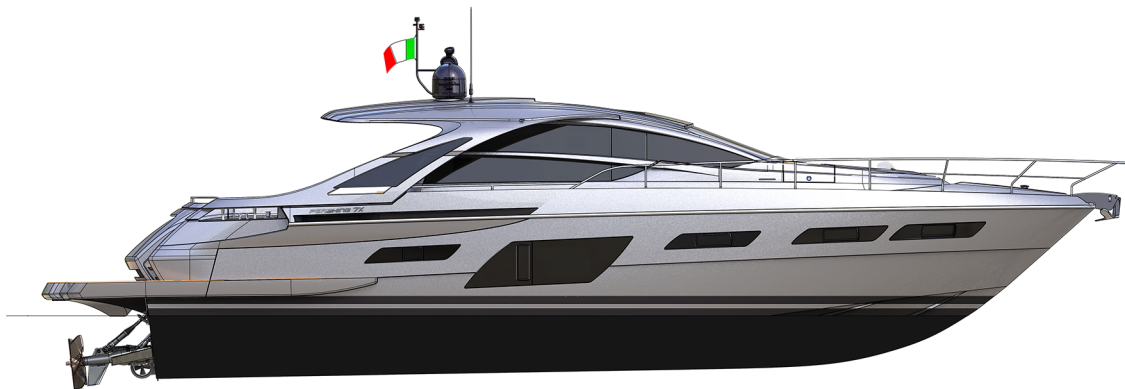


*PERSHING*

**AMAS**



# PERSHING 7X



**EN TECHNICAL SHEET**


**ENGINES**

2 x MAN V12 1800 Power 1800 mhp / 1323 kW at 2300 rpm - TS P85X

**HULL TYPE**

warped hull with spray rails and aft deadrise 17°

LOA = Overall Length standard ISO 8666 .....	69 ft. 3 in.
LH = Hull length standard ISO 8666 .....	66 ft. 6 in.
LWL = Waterline length (boat fully laden) .....	52 ft. 11 in.
Maximum beam .....	17 ft. 6 in.
Overall height from keel .....	23 ft. 2 in.
Displacement unladen .....	77162 lbs.
Displacement laden .....	92594 lbs.
Depth under propellers (boat fully laden) .....	5 ft. 0 in. <sup>[4]</sup>
P = bow + stern projections /appendages .....	2 ft. 9 in.
Fuel tank capacity .....	951 US Gals.
Water tanks capacity .....	211 US Gals.
Maximum number of people on board .....	16
Light displacement maximum speed = 1/3 laden .....	(MAN 1800) 50 knots <sup>[2]</sup>
Nr. Cabins .....	3
Nr. Bathrooms .....	3
Nr. Crew Cabins .....	1
Nr. Crew Bathrooms .....	1
Safety equipment .....	12 <sup>[3]</sup>
Design category .....	A
Certification documents .....	B + F + Aa (sound emission)
.....	RINA S.p.A.

STANDARD ISO 8666 

**HULL/DECK CONSTRUCTION MATERIAL**

Hull: construction from female mould with sandwich bottom and sides closed cell PVC core; reinforcement fibers: E glass and carbon fiber. Vacuum infusion with vinylester resin. Stratification of longitudinal stiffeners with polyurethane foam; stratification of transversal stringers with PVC core at bow, with polyurethane foam at stern.

Deck: construction from female mould in closed cell PVC core sandwich; glass E and carbon reinforcing fibres. Vacuum infusion with vinylester resin. Stratification of stiffeners with polyurethane foam.

Superstructure: construction from female mould with vacuum infusion lamination with epoxy resin in closed cell PVC core sandwich format; carbon reinforcing fibres.

Main bulkheads and interior structural floors (excluding the engine room) in sandwich format vacuum infusion lamination.

Structural tanks for fuel, fresh water, grey and black water, are laid with vinylester resin.

Areas of the deck, such as the swim platform and aft steps, are covered with teak sealed with polymerized black rubber caulking.

Other areas according to the position have an anti slip or polished gelcoat finish such as hull and superstructure.

**PAINTING**

Keel painting: upon request\*.

External painting: white gelcoat. The topside parts, which have a different colour of the gelcoat in Pershing graphics, are treated with black polyurethane bicomponent painting.

\*Antifouling paint (OPT) can be applied upon request in order to guarantee more efficient antifouling properties.

<sup>[1]</sup> This technical specification is valid and refers to yacht ordered as of 1 September 2020.

<sup>[2]</sup> Performances are approximate and they refer to the standard equipment of the boat, at 1/3 of load corresponding to ton 37,1 (81736 lb), performances estimated at the following conditions: calm sea, absence of wind, 25°C air temperature, clean hull and special propellers set for those conditions and 8 people on board. Overloading the yacht by 1,5 ton / 3307 lb top speed decreases of 1 knot.

<sup>[3]</sup> The shipyard does not supply complete safety equipment since Pershing yachts are sent throughout the world. It is the responsibility of the owner to care for the complete safety equipment as required by individual countries. Pershing can, however, supply safety equipment upon request.

<sup>[4]</sup> The stated draft is with the surface drives in the zero position.

# PERSHING 7X

## STANDARD EQUIPMENT

### ◆ ANTENNAS AREA

- Dome
- GPS antenna
- Horn
- Navigation lights
- Signal and flag mast
- VHF antenna (2)

### ◆ MAIN DECK

#### COCKPIT/OUTSIDE AFT DINETTE

- Cockpit chairs (2)
- Led lights in the ceiling
- Port side cockpit cabinet in fiberglass with sink and fresh water
- Sofa with locker
- Starboard cockpit cabinet in fiberglass
- Teak table with fixed support
- Upholstery in white vinyl
- Waterproof speakers with independent volume control (4)

#### ACCESS TO CREW CABIN

- Fiberglass door with handle and lock
- Stainless steel and teak ladder

#### ACCESS TO ENGINE ROOM

- Access to engine room through hatch and locker
- Access to engine room through inox and teak ladder

#### AFT SUNBATHING AREA

- Hatch for access to the garage
- Stainless steel handrails
- Sunpad with seat upholstered in white vinyl fabric

#### AFT MOORING STATION

- Capstan 1500W with foot control (2)
- Fairlead in stainless steel with rolls (2)
- Stainless steel mooring cleat (2)

#### AFT GARAGE

- Fresh water outlet from water tank
- GRP hatch
- Hydraulic system for garage hatch
- Led spotlight (2)

#### ACCESS TO BATHING PLATFORM

- Aft platform with electro-hydraulic system
- Aft steps and platform covered in teak
- Courtesy lights for steps
- External shower with mixer
- Shore plug 100A
- Shore water inlet

- Stainless steel gate (port/stb)
- Swim ladder, hydraulic, hideaway with alarm
- Telescopic hydraulic hideaway gangway with (2) remote controls

#### SIDE WALKWAYS

- Black water pump out cap
- Fresh water filling cap
- Fuel filling cap
- Led lights in the floor
- Side Pershing Logo in silicon (2)
- Stainless steel mooring cleat at midship (2)
- Stainless steel railing with hooking points
- Steel rub-rail

#### BOW SUNPAD

- Bow sunpad upholstered in vinyl
- Fiberglass door with handle and lock
  - Life rafts lockers (2)
- Fiberglass door with handle and lock (2)
  - Storage below the sunpad at bow
- GRP chaise longue
  - Upholstery in vinyl fabric
- Led lighting
- Side cup holder (2)

#### BOW MOORING STATION

- Access to bow locker with hatch and closure
- Antiskid surface
- Basket chain
- Bow anchor fitting
- Courtesy LED lights
- Galvanized anchor Bruce with join (50Kg)
- Galvanized chain 75m 12mm
- Sea water outlet for chain wash and fire extinguishing
- Shower with fresh water mixer
- Stainless steel mooring cleat bow (2)
- Windlass 2700W with waterproof control pad

#### HELM STATION

- Bow thruster joystick
- Carbon look dashboard panels
- Compass
- Co-pilot seat covered with Frau leather
- Double USB watertight socket
- Electronic levers for engine controls
- Engine room remote camera on plotter screen
- Fixed armrest with wipers control at pilot's portside
- Helm wheel in Poltrona Frau leather
- Instrument dashboard in GRP painted

- Integrated autopilot function
- Integrated panel for alarms and electrical data management
- Movable armrest with throttles at pilot's stbd
- Multifunction touch display for navigation system (radar, chartplotter, GPS, echosounder, monitoring system, engines and surface drive data) (2x12")
- OBD (On Board Diagnostic) socket
- Pilot seat in Poltrona Frau leather
- Port and starboard side electric window
- Rudder angle, flap and trim panel
- Sliding glass roof with electrical movement
- Trim joysticks
- Trim tabs joysticks
- VHF radio
- Windshield in transparent tempered glass
- Windshield wiper/washer (2)

#### SALOON

- Access to the night area through a stairway with parquet steps and courtesy lights
- Aft sofa in fabric with drawers
- Audio video system
  - Hi-Fi system with 4 speakers and subwoofer
  - TV LED 32" on furniture
- Ceiling covered in vinilic fabric
- Ceramic set for 6 people
- Cutlery set for 6 people
- Digitally controlled A/C system
- Fabric manual roll curtains for side windows and sliding aft door
- Foldable wooden dining table with high/low manual movement
- Folding chairs (2) in Frau leather
- Forward chaise longue
- Glasses set for 6 people
- Hideaway sliding aft door in black painted aluminium and crystal
- Led spots lights in the ceiling
- Side windows in monolithic / stratified tempered glass
- Soft touch switch plates
- Stainless steel handrails
- Structural GRP floor covered in parquet
- Unsealed wood furniture with opening doors and shelves
- Wood holder for glasses and plates

- Ceramic glass hob with 4 burners
- Digitally controlled A/C system
- Dishwasher for 10 people
- Electric oven
- Extractor hood
- Faucet
- Floor covered by parquet
- Fridge 255l of which 57l of refrigerator
- Galley top in corian
- Lacquered ceiling
- Lacquered hanging lockers with internal shelf
- Led ceiling lights
- Light underneath shelves
- Opening porthole in stainless steel with mechanic hook
- Rubbish bin
- Soft touch switch plates
- Stainless steel washbasin
- Under top lacquered unit furniture with opening doors, internal shelves and drawers
- Walls covered in unsealed wood

#### CORRIDOR

- Ceiling panels covered with vinyl fabric
- Led lights in the ceiling
- Mirror
- Soft touch switch plates and sockets
- Structural GRP floor covered in parquet
- Unsealed wood furniture with opening doors and shelves
- Walls covered in unsealed wood

#### VIP CABIN

- Back-lighted leather panels above bedhead
- Blind compartments with vinyl finishing
- Ceiling covered in vinyl fabric
- Digitally controlled A/C system
- Double bed with bedframe upholstered in leather and drawers underneath
- Emergency exit to upper deck from hatchway
  - Blinder for hatchway
- Leather coated window frames
- Led lights in the ceiling
- Manual roll curtains in fabrics
- Mattress, pillows and bedcover
- Opening porthole in stainless steel with mechanic hook (2)
- Reading lights (2)
- Soft touch switch plates
- Structural GRP floor covered in moquette
- System HI-FI
- Walls covered in unsealed wood

### ◆ LOWER DECK

#### GALLEY

- Wardrobe with wooden doors and mirror, clothes hanger and lighting (2)
- Wood interior door
  - Door handle with thumb lock
  - Door stops

#### VIP BATHROOM

- Clothes hook (2)
- Combined washbasin faucet
- Door in wood cabin side, lacquered bathroom side
  - Door handles with thumb lock
- Electric WC
- Floor in parquet
- Internal walls covered in laminate
- Lacquered ceiling
- Led lights in the ceiling
- Manual Venetian blind in aluminium
- Mirror
- Opening portholes in stainless steel with mechanical hook
- Shower box covered with standard laminate and tempered glass
- Shower faucet with double outlet, diverter and shower head
- Shower floor in corian
- Soft touch switch plates
- Toilet brush holder
- Toilet roll holder
- Towel rail
- Wash basin
- Wood washbasin unit with doors, with glass top

#### DOUBLE GUEST CABIN

- Back-lighted leather panels above bedhead
- Blind compartments with vinyl finishing
- Ceiling covered in vinyl fabric
- Digitally controlled A/C system
- Leather coated window frames
- Led ceiling lights
- Manual roll curtain in fabric
- Mattress, pillow and bedcover (2)
- Mirror
- Opening porthole in stainless steel with mechanic hook
- Reading lights (2)
- Single bed with leather lining and storage underneath (2)
- Soft touch switch plates
- Structural GRP floor covered in moquette
- System mini HI-FI
- Walls covered in wood
- Wardrobe with wooden doors and mirror, clothes hanger and lighting
- Wood interior door
  - Door handles with thumb lock

- Wood nightstand
- Wooden TV wall

#### GUEST BATHROOM

- Clothes hook (2)
- Combined washbasin faucet
- Door in wood cabin side, lacquered bathroom side
  - Door handles with thumb lock
- Electric WC
- Floor in parquet
- Internal walls covered in laminate
- Lacquered ceiling
- Led ceiling lights
- Manual roll curtain in waterproof fabric
- Mirror
- Opening porthole in stainless steel with mechanical hook
- Shower box covered with standard laminate and tempered glass
- Shower faucet with height adjustable hand shower
- Shower floor in corian
- Soft touch switch plates
- Toilet brush holder
- Toilet roll holder
- Towel rail
- Wash basin
- Wood washbasin unit with doors, with glass top

#### MASTER CABIN

- Audio video system
  - Hi-Fi system with 2 loudspeakers and subwoofer
  - TV LED 32"
- Back-lighted leather panels above bedhead
- Blind compartments with vinyl finishing
- Ceiling covered in vinyl fabric
- Digitally controlled A/C system
- Double bed with bedframe in leather
- Fabric pouff
- Leather coated window frames
- Led lights in the ceiling
- Manual roll curtains in fabric
- Mattress, pillows and bedcover
- Mirror
- Opening porthole in stainless steel with mechanical hook (2)
- Reading lights (2)
- Safe
- Side windows in monolithic tempered crystal (2)
- Soft touch switch plates
- Structural GRP floor covered in moquette
- Walls covered in unsealed wood
- Wardrobe with wooden doors and mirror, clothes hanger and lighting

- Wood furniture dx, sx, with opening doors, shelves and drawers
- Wood interior door
  - Door handles with thumb lock
  - Door stops
- Wood nightstand (2)
- Wood vanity furniture under tv with opening doors and shelves

#### MASTER BATHROOM

- Bidet
- Clothes hook (2)
- Corian shower plate
- Door in wood cabin side, lacquered bathroom side
  - Door handles with thumb lock
- Electric WC
- Internal walls covered in laminate
- Lacquered ceiling
- Lacquered hanging lockers
- Led lights in the ceiling
- Manual Venetian blind in aluminium
- Mirror over the basin
- Mixer tap for washbasin and bidet
- Opening portholes in stainless steel with mechanical hook
- Parquet floor
- Shower faucet with double outlets with diverter and shower head
- Shower laminated walls covered and tempered glass door
- Soft touch switch plates
- Toilet brush holder
- Toilet roll holder
- Towel rail (2)
- Wash basin on furniture
- Wood washbasin unit with drawers and glass top

#### CREW AREA

- CAPTAIN'S CABIN
  - Built in ceiling spotlight
  - Ceiling covered in vinyl fabric
  - Digitally controlled A/C system
  - Lacquered wardrobe with doors
  - Laminate and vinyl blind compartments
  - Mattress, pillow and bedcover
  - Opening porthole in stainless steel with mechanical hook
  - Reading light
  - Single bed with storage
  - Soft touch switch plates
  - Structural GRP floor covered with vinyl
  - Walls covered with std laminate and panels upholstered in vinyl fabric
- CAPTAIN'S BATHROOM

- Built in ceiling spotlight (2)
- Clothes hook (2)
- Electric WC
- Extractable shower with mixer tap
- Fiberglass floor
- GRP washbasin unit with lacquered doors
- Lacquered ceiling
- Mirror
- Shower curtain
- Shower floor in teak
- Soft touch switch plates
- Toilet brush holder
- Toilet roll holder
- Towel rail

### ◆ TECHNICAL AREA

#### ENGINE ROOM

- Aluminum floor covered with anti slip material
- Coupling joint between adaptor and flange (2)
- Diesel engines MAN 12V 1800mhp (2)
- Dynamic air intakes with filter separator air and water
- E/pump A/C
- Electric extractor (2)
- Engine exhaust muffler (2)
- Engine room pillars (2)
- Fresh water outlet in engine room
- Generator manifold and gas separator
- Hydraulic oil heat exchanger
- Hydraulic steering oil tank
- Hydraulic unit for steering, trims and trim tabs
- Hydraulic unit for swim ladder, aft sliding door, gangway and garage hatch
- Light switch
- Power generator 21,5kW 60Hz with soundproof housing
- Stainless steel engine exhaust raiser (2)
- Thermal acoustic insulation
- Waterproof camera interfaced with bridge
- Waterproof fixed explosion-proof neon light (2)

#### PROPULSION AND MANEUVERING EQUIPMENT

- Bow thruster (250Kg)
- Hydraulic steering
- Hydraulic trim tabs
- Surface drive system with trim (2)
- Surface propeller (2)

### ◆ SYSTEMS

#### FRESH WATER SYSTEM

- Boiler 30l - electric
- Fresh water pump
- Level sensor

# PERSHING 7X

- Structural GRP main tank (800l)

## SEA WATER SYSTEM

- By-pass valve for emergency bilge discharge from engines (2)
- Dynamic seawater intake (4)
- Fire extinguishing and chain wash e/pump
- Sea water basket filter for engines, power generators, A/C pumps, services and fire extinguishing system (5)
- Static seawater intake

## GREY WATER SYSTEM

- E/pump main tank discharge
- Level sensor
- Manifold by-pass for emergency pump discharge
- Structural GRP main tank (200l)
- Valve 3 way in galley

## BLACK WATER SYSTEM

- E/pump tank discharge
- Level sensor
- Manifold by-pass for emergency pump discharge
- Structural GRP tank (250l) with deck connection for tank pumping out

## FIRE EXTINGUISHING SYSTEM

- Bow thruster locker smoke detector
- Control unit in crew area and siren in cockpit
- Emergency engine shut down remote control
- Fire extinguishing system
- Manual /automatic extinguisher in engine room FM200
- Manual powder extinguisher 1Kg (1 for each room)
- Manual powder extinguisher 6Kg in cockpit
- Smoke detector in Engine Room
- Smoke detector salon, cabins, crew
- Smoke detector system

## AIR CONDITIONING SYSTEM

- A/C in all cabins and upper saloon (crew bathroom excluded)
- Compressor for Tropical A/C main unit (92kBTU)

## ELECTRICAL SYSTEM

- Batteries cut-off
- Battery charger for engines
- Emergency parallel connection between services batteries and engines batteries
- Engines starting battery (4+4)
- Generator battery

- Ground bonding system all along the hull joined to the anodes protection on the transom
- Ground fault interrupters 120V - 6mA in bathrooms, galley and engine room
- Isolation transformer 25kVA
- Lithium services battery (2)
- Main electric panel with magneto-thermic switches
- Preparation for decoder installation in all cabins: cable 120V + F connector + TV antenna cables
- Services battery charger
- Shore socket and loose cable 100A
- Socket American type 120V, double in each box
- Switchboard in dinette
  - Voltage measuring instruments
- Voltage measuring instruments 24V

## FUEL SYSTEM

- Electronic fuel level remote indicator in dashboard
- Fuel prefilter (2)
- Manual fuel discharge/load drainage pump
- Racor fuel prefilter to generator
- Structural GRP tank 3600l
- Visual fuel gauge

## BILGE SYSTEM

- Automatic immersion e/pumps for bilge discharge in each compartment with level sensor
- Emergency bilge e/pump for each bilge compartment
- Emergency engine room bilge system discharge through engines intake suction

## ◆ EQUIPMENT

- Bag with logo (2)
- Black mooring line Ø22 (4x25m)
- Cylindric fender with line and cover (6)
- Diurnal navigation shapes mast
- Floating luminous buoy
- Interactive Digital Manual on Ipad
- Life jacket (12)
- Life saver with floating line
- Means of unassisted reboarding
- Pershing bath towel (6)
- Pershing towel set (6)
- Rigid, self inflating life raft for 6 people (2)
- Safety hooks
- Spherical fender with line and cover (2)
- Telescopic boat hook
- Weather station: clock, barometer, thermometer

This document shall not constitute in any circumstances whatsoever any offer by the shipyard to any person or be incorporated into any contract.

Any and all information contained in this document, including without limitation all technical data, performance, illustrations and drawings, are not contractual and refer to European standard models of motor yachts built by the shipyard and have been up-dated by the shipyard as of the date of issue of this document. The only valid technical reference or description is the specific parameters of each motor yachts cited only on purchase of the same. Therefore the only indications binding on the seller are contained solely in the sale agreement. This document is based on information available at the date of issue. Notwithstanding all efforts to insure accuracy, the information contained in this document may not cover all details, subsequent changes, not accurately foresee or report all possible scenarios. The shipyard reserves the right to modify its motor yachts and to substitute the manufacturers and/or the suppliers of any component and/or system and/or equipment due to product changes and/or improvements and/or availability of supply, changes in laws and/or regulations applicable, technology, know-how, provided that any substituted component and/or system and/or equipment of the motor yachts shall be of equivalent or superior quality to that shown in this Brochure. Displays, photos, schemes, designs or examples contained in this document are solely and exclusively reproduced to highlight the information contained. Due to the different characteristics of each yacht, the shipyard declines any and all liability for any use thereof on the basis of the information contained in this document.

This document and its contents may not be copied or reproduced and may not be modified or altered, in whole or in part.

The sale of this document and its contents is prohibited and no admitted.

Images may contain optional equipment or accessories, so do not necessarily comply with standard configuration.

