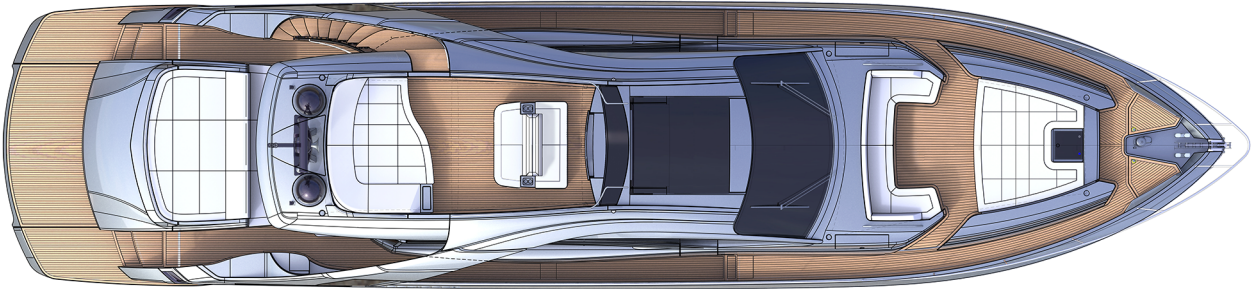


PERSHING

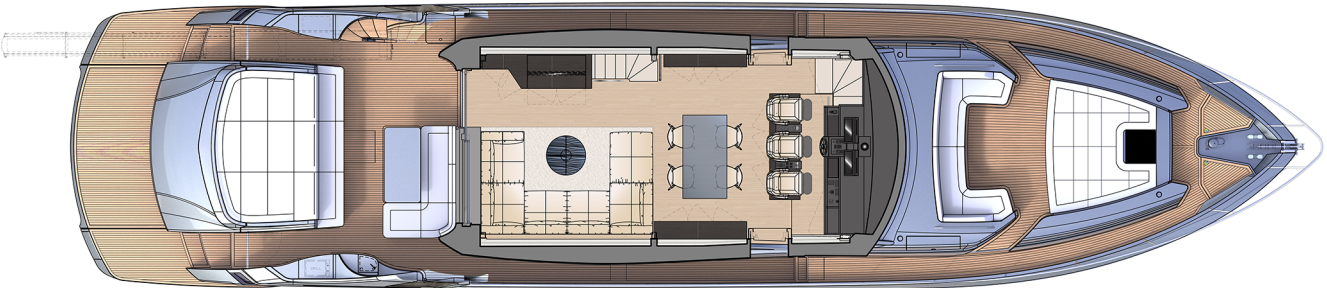
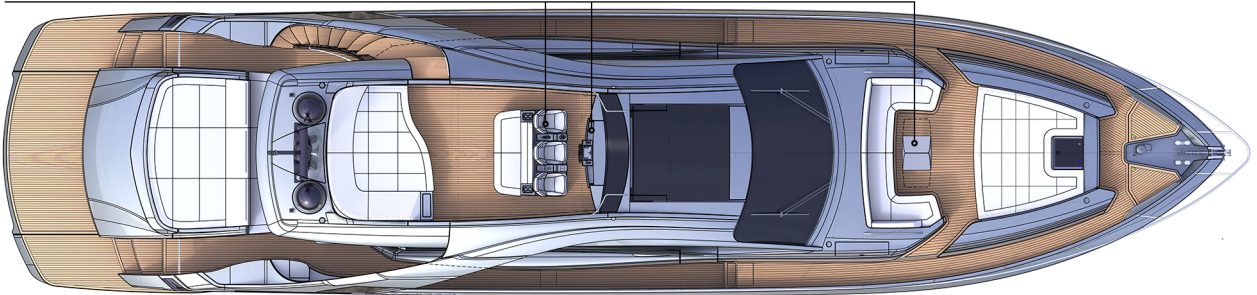
AMAS

EX

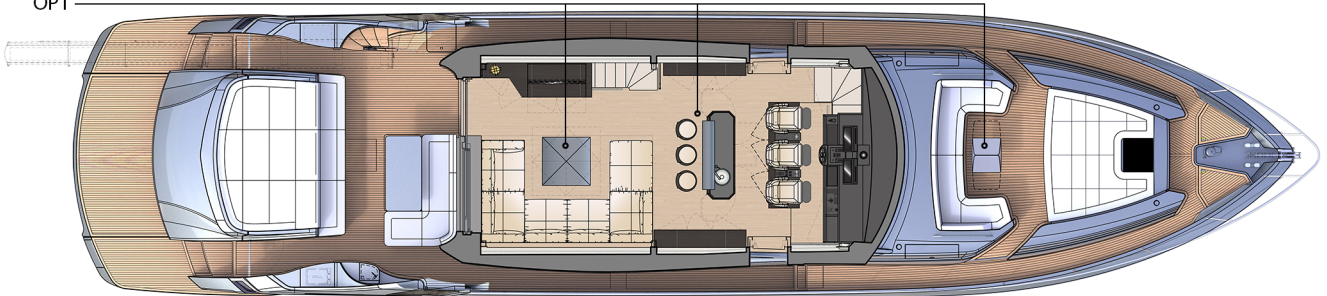
PERSHING BX



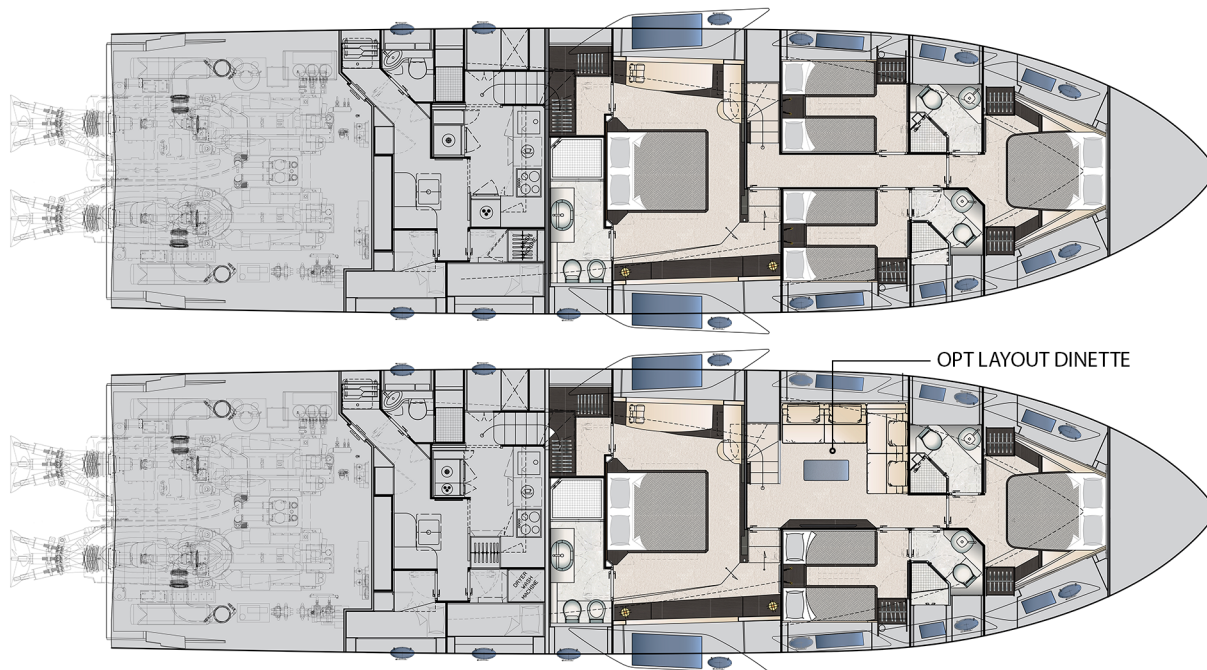
OPT



OPT



PERSHING BX



OPT LAYOUT DINETTE

EN TECHNICAL CHARACTERISTICS

ENGINES

2 x MTU 16V 2000 M96 Power 2435 mhp / 1790 kW at 2450 rpm - TS 95P (std)
 2 x TS 95P Power 2638 mhp / 1939 kW at 2450 rpm - TS 100 (opt)

HULL TYPE

warped hull with spray rails and aft deadrise 20°

LOA = Overall Length standard ISO 8666	83 ft. 10 in.
LH = Hull length standard ISO 8666	75 ft. 0 in.
LWL = Waterline length (boat fully laden)	64 ft. 4 in.
Maximum beam	19 ft. 3 in.
Overall height from keel to radar arch	20 ft. 9 in.
Displacement unladen	125663 lbs.
Displacement laden	147710 lbs.
Depth under propellers (boat fully laden)	4 ft. 7 in. ^[4]
P = bow + stern projections /appendages	8 ft. 10 in.
Fuel tank capacity	1638 US Gals.
Water tanks capacity	343 US Gals.
Maximum number of people on board	16
Light displacement maximum speed = 1/3 laden	(MTU 2435) 45 knots ^[2]
.....	(TS 2638) 48 knots ^[2]
Nr. Cabins	4
Nr. Bathrooms	3
Nr. Crew Cabins	2
Nr. Crew Bathrooms	1
Safety equipment	12 ^[3]
Design category	A
Certification documents	[Sound Emission] RINA S.p.A.

STANDARD ISO 8666 

HULL/DECK CONSTRUCTION MATERIAL

Hull: construction from female mould with sandwich bottom and sides closed cell PVC core; reinforcement fibers: E glass and carbon fiber. Vacuum infusion with vinylester resin. Stratification of longitudinal stiffeners with polyurethane foam; stratification of transversal stringers with PVC core at bow, with polyurethane foam at stern.

Deck and superstructure: construction from female mould with vacuum infusion lamination with vinylester resin in closed cell PVC core sandwich format; glass and carbon reinforcing fibres.

Main bulkheads and interior structural floors (excluding the engine room) in sandwich format vacuum infusion lamination, structural tanks for fuel, fresh water, grey and black water, are layared with vinylester resin, black water rotoformed removable tank.

Areas of the deck such as: the bow area (except the mooring area), bow dinette, side decks, walking areas of the cockpit, swim platform and aft steps, are covered with teak sealed with polymerized black rubber caulking. Other areas according to the position have an anti slip or polished gelcoat finish such as hull and superstructure.

PAINTING

The inside of the hull and the bilges are protected by mat finished gelcoat.
 Submerged area is treated with two coats of antifouling paint for "high speed" yachts, after an application of epoxy primer.

(1) This technical specification is valid and refers to yacht ordered as of 1 September 2020.
 (2) Performances are approximate and they refer to the standard equipment of the boat, at 1/3 of load corresponding to ton 59.8 (131769 lb), performances estimated at the following conditions: calm sea, absence of wind, 25°C air temperature, clean hull and special propellers set for those conditions and 6 people on board. Overloading the yacht by 2 ton / 4409 lb top speed decreases of 1 knot.
 (3) The shipyard does not supply complete safety equipment since Pershing yachts are sent throughout the world. It is the responsibility of the owner to care for the complete safety equipment as required by individual countries. Pershing can, however, supply safety equipment upon request.
 (4) The stated draft is with the surface drives in the zero position.

STANDARD EQUIPMENT

◆ UPPER SUN DECK

ACCESS TO THE SUNDECK

- Carbonfibre and teak-laid stairs with stainless steel handrail
- Grp and stainless steel gate
- LED lights
- Plexiglass windshield
- Sofa in GRP upholstered with vinyl fabric and with lockers
- Stainless steel handrail for stairs
- Stainless steel side handrail
- Stainless steel stern handrail
- Sunpad in vinyl
- Teak
- Waterproof speakers with independent volume control (2)

ANTENNAS AREA

- Dome (2)
- GPS antenna
- Horn
- Lights mast in black color stainless steel
- Navigation lights for Italian Flag
- Radar
- Signal mast in GRP
- VHF antenna (2)

◆ MAIN DECK

COCKPIT/OUTSIDE AFT DINETTE

- Barbecue
- Ceiling lights with LED stripes
- Dimmer
- Emergency engine shut down remote control
- Fire extinguishing system and alarm activation remote control from portside furniture
- Fresh water tap
- GRP furniture on portside
- GRP furniture on starboard
- GRP sofa with seat and backrest in white vinyl
 - Drawer fridge (30l)
- Low lighting under sunpad seating
- Perimeter curtain rod for canopies
- Sink
- Teak
- Teak table with fixed support
- Watertight loudspeaker with independent control (2)

ACCESS TO THE ENGINE ROOM

- Access through teak hatchway
- Folding ladder

ACCESS TO STERN SUNBATHING AREA

- GRP cover hatch to garage

- GRP sofa with seats and backrest upholstered in vinyl
- Stainless steel handrail Ø30mm on the aft platform

AFT MOORING STATION

- Capstan 1700W (2)
- Fairlead in stainless steel with rolls (2)
- Stainless steel mooring cleat (2)

AFT GARAGE

- Garage door
- Hydraulic system for garage hatch
- Tender towing system with winch
- Tender Williams 325 TJ
- Waterproof lights in garage (2)

ACCESS TO THE BATHING PLATFORM

- Aft steps in teak
- Courtesy lights for steps
- External shower
- Fresh water tap
- Shore power 63A 230V
- Shore water inlet
- Stainless steel gate for cockpit entry (2)
- Swim ladder, hydraulic, hideaway with alarm
- Swimming teak platform with hydraulic movement
- Telescopic hydraulic hideaway gangway with (2) remote controls

SIDE WALKWAYS

- Access to crew quarter through teak hatchway
 - Stainless steel and teak-laid steps
- Black water pump out cap
- Electric pantograph side door (2)
- Fresh water filling cap
- Fuel filling cap, dx and sx
- LED lighting
- Side locker at bow dinette with closure (2)
- Side Pershing silicon logo (2)
- Stainless steel grab on side of superstructure (2)
- Stainless steel mooring cleat at midship (2)
 - Fender rope protection
- Stainless steel railing Ø40mm with stanchions Ø30mm and hooking points
- Steel rub-rail
- Teak

BOW MOORING STATION

- Access to bow locker with double hatch and closure
- Chain basket
- External shower

- Galvanized anchor with joint (1 x 50kg)
- Galvanized chain 100m 14mm
- Mooring LED lights
- Stainless steel mooring bow ancor roller
- Stainless steel mooring cleat at bow (2)
- Windlass 2700W with waterproof control pad

OUTSIDE FORWARD DINETTE

- GRP sofa with seats and backrest upholstered in white vinyl
 - Life rafts lockers (2)
 - Lockers (2)
- Led lighting
- Liferrafts housing (2)
- Manual bimini top, 4 carbon poles and shade canvas

ACCESS TO BOW SUNBATHING AREA

- Bow sunpad upholstered in vinyl
- Storage below the sunpad at bow
- Teak
- Watertight loudspeakers with independent control (2)

HELM STATION

- Bow thruster joystick
- Ceiling spot LED lights
- Ceiling with black Frau leather
- Compass
- Co-pilot seat covered with Frau leather with double electric control (2)
- Digitally controlled A/C system
- EASYSET function
- Echo box in-hull transducer
- Electronic levers for engine controls
- Engine room remote camera on plotter screen
- Fixed armrest with tiller and wipers control at pilot's portside
- Glove compartment upholstered in Frau leather
- Helm wheel in Frau leather
- Instrument dashboard upholstered in Frau leather
- Integrated autopilot function
- Integrated system for alarms and electric data management NAVIOP
- Movable armrest with throttles and joysticks, at pilot's stdbd
- Multifunction touch display for navigation system (radar, chartplotter, GPS, echosounder, monitoring system, engines and surface drive data) (3x16")
- OBD (On Board Diagnostic) socket
- Panels in carbon fiber

- Pilot seat with covered with Frau leather with double electric control
- Sliding glass roof with electric movement
- Soft touch switch plates
- Surface propellers trim joystick
- Tiller
- Touch display for engine and surface drive control (1x16")
- Trim tabs joystick
- Usb socket
- VHF radio
- Windshield in transparent tempered glass
- Windshield wiper/washer (2)

SALON

- Audio-video system
 - Amplifier for external areas
 - Apple TV
 - Coastal internet system (GPRS/UMTS)
 - Electric lifting mechanism for TV
 - Hideaway 43" LED TV
 - Hi-fi surround: "5+1" system sintoamplifier and Blu Ray player
 - Single remote control for the audio-video system (1-Pad Mini)
- Cabinet for TV with shelves
- Ceiling covered ecoléather
- Ceiling LED lights
- Ceramic set for 12 people
- Chairs upholstered in Frau leather (4)
- Coffe table upholstered in Frau leather
- Digitally controlled A/C system
- Dimmer
- Dining table for 6 people
- Electric fabric roll curtains for side windows and sliding aft door
- Folding chairs in aluminium and Frau leather (4)
- Furniture covered in wood starboard side
 - Hi-Fi rack
- Glasses set for 12 people
- Hideaway sliding aft door in black painted aluminium and crystal
- Intercom cordless system
- Parquet floor
- Rug under the sofa
- Side windows in monolithic / stratified tempered glass
- Sofa in Frau leather
- Soft touch switch plates
- Stainless steel cutlery set for 12 people
- Structural floor
- Walls upholstered in Frau leather
- Wood holder for glasses and plates

- Wooden closet in access to lower cabins
- Wooden furniture at portside
 - Fridge (75l)
 - Ice maker

◆ LOWER DECK

LOBBY

- Ceiling LED lights
- Ceiling with vinyl fabric panels
- Mirrors
- Soft touch switch plates
- Structural GRP floor covered with carpet
- Walls covered in wallpaper
- Wooden doors

VIP CABIN

- Audio-video system
 - LED TV 28"
 - Loudspeakers (2)
 - Mini Hi-fi CD/DVD
- Blind compartments covered in laminated and vinyl
- Ceiling LED lights
- Ceiling with lacquered ceiling frame and panels upholstered in vinyl fabric
- Digitally controlled A/C system
- Dimmer
- Double bed in wood with headboard upholstered in Frau leather and locker underneath
 - Mattress, pillow and bedcover
- Emergency hatchway to deck with folding ladder and blinder
- Fixed side windows in stratified crystal with opening porthole in stainless steel with mechanic hook (2)
- Intercom cordless system
- Led Light underneath the bed
- Manual roll curtains in fabric
- Mirror at fore bulkhead
- Reading lights (2)
- Soft touch switch plates
- Structural GRP floor covered in moquette
- Walls covered in wood
- Wardrobe in wood, with clothes rack, internal light (2)
- Wood nightstand (2)
- Wooden door
 - Door handles

VIP BATHROOM

- A/C system outlet
- Aluminium Venetian blinds
- Blind compartments covered in laminated and vinyl
- Ceiling LED lights
- Clothes hook (2)
- Combined washbasin faucet
- Electric WC in ceramic
- Lacquered ceiling
- Mirror

- Opening portholes in stainless steel with mechanical hook
- Parquet floor
- Shower box in std laminate with tempered glass door
 - Shower floor in Corian
 - Shower with mixer
- Soft touch switch plates
- Toilet brush holder
- Toilet roll holder
- Towel rail
- Walls covered in laminate
- Wash basin in white ceramic on furniture
- Washbasin unit in wood with doors
- Wooden door
 - Door handles
 - Door stops

DOUBLE GUEST CABIN (2)

- Audio-video system
 - LED TV 28"
 - Loudspeakers (2)
 - Mini Hi-fi
- Blinds compartment with vinyl finishing
- Ceiling LED lights
- Ceiling with lacquered ceiling frame and panels upholstered in vinyl fabric
- Digitally controlled A/C system
- Dimmer
- Intercom cordless system
- Light stripe underneath the bed
- Manual roll curtains in fabric
- Mirrors at aft bulkhead
- Opening porthole in stainless steel with mechanic hook (2)
- Reading lights (2)
- Single bed in wood with head upholstered in Frau leather (2)
 - Mattress, pillow and bedcover
- Soft touch switch plates
- Structural GRP floor covered in moquette
- Walls covered in wallpaper
- Walls covered in wood
- Wardrobe covered in wood, with clothes rack, internal light
- Wood nightstand
- Wooden door
 - Door handles
 - Door stops

GUEST BATHROOM/DAY HEAD

- A/C system outlet
- Aluminium Venetian blinds
- Blind compartments with laminated
- Ceiling LED lights
- Clothes hook
- Combined washbasin faucet
- Curtain compartment
- Electric WC in ceramic

- Lacquered ceiling
- Mirror
- Opening portholes in stainless steel with mechanical hook
- Parquet floor
- Shower box in std laminate with tempered glass door
 - Shower floor in Corian
 - Shower mixer
 - Shower soap dispenser
 - Showerhead and shower handset
- Soft touch switch plates
- Toilet brush holder
- Toilet roll holder
- Towel rail
- Walls covered in laminate
- Wash basin in white ceramic on furniture
- Washbasin unit in wood with doors
- Wooden door (2)
 - Door handles (2)
 - Door stops

MASTER CABIN

- Access to the cabin through a stairway with wood steps
- Audio-video system
 - TV LED 43"
 - Apple TV
 - Loudspeakers (2)
 - Single remote control for the audio-video system (I-Pad Mini)
 - Sintoamplifier and Blu Ray player
- Beauty shelf upholstered in Frau leather
- Blinds compartment with vinyl finishing
- Ceiling LED lights
- Ceiling with lacquered ceiling frame and panels upholstered in vinyl fabric
- Chaise longue in Frau leather
- Digitally controlled A/C system
- Dimmer
- Double bed in wood with headboard upholstered in Frau leather, underneath locker and drawers
- Electric black out roll curtain
- Electric roll curtains
- Fixed side windows in stratified crystal (2)
- Furniture in wood (stdbd)
- Handrail lined with Frau sole leather
- Hi-fi furniture in wood (ptsd)
- Intercom cordless system
- Led light underneath the bed
- Mattress, pillow and bedcover
- Mirror at bow bulkhead
- Mirrors at aft bulkhead
- Opening porthole in stainless steel with mechanic hook (2)
- Ottoman in Frau leather
- Reading lights (2)

- Soft touch switch plates
- Stern bulkhead sound insulation
- Structural GRP floor covered in moquette
- Walls covered in wallpaper
- Wardrobe covered in wood, with clothes rack, dresser
 - Ceiling LED lights
 - Digital safe
 - Door handles in metal
 - Door stops
 - Mirror on beauty shelf
 - Stern bulkhead sound insulation
 - Wooden door
- Wood nightstand (2)
- Wooden door
 - Door handles
 - Door stops
- Wooden furniture unit with fridge and doors

MASTER BATHROOM

- A/C system outlet
- Aluminium Venetian blinds
- Bidet in ceramic
- Blinds compartment covered in laminated
- Ceiling LED lights
- Clothes hook (2)
- Combined bidet faucets
- Combined washbasin faucet
- Door
 - Door stops
- Electric WC in ceramic
- Lacquered ceiling
- Lacquered walls
- Mirror
- Opening portholes in stainless steel with mechanical hook
- Parquet floor
- Shower walls covered with mosaic and tempered glass door
 - Mirror
 - Mosaic shower plate
 - Object holder inside shower
 - Shower faucet
 - Showerhead and shower handset
- Soapdish
- Soft touch switch plates
- Stern bulkhead sound insulation
- Toilet brush holder
- Toilet roll holder
- Towel rail
- Wash basin
- Washbasin unit in wood with doors

◆ CREW AREA

GALLEY

- Audio-video system
 - LED TV 24"
 - Loudspeakers (2)
 - Mini Hi-fi CD/DVD

- Ceiling spotlight
- Ceiling with lacquered ceiling frame and panels upholstered in vinyl fabric
- Ceramic glass hob with 4 burners
- Digitally controlled A/C system
- Dishwasher for 12 people
- Electric oven
- Extractable faucet
- Extractor fan
- Galley top in acrylic stone
- Hanging lockers and internal shelves
- Intercom cordless system
- Lacquered sliding door, crew area/galley
- Lacquered sliding door, salon stairs/ galley
- Light underneath shelves
- Openable table
- Ottoman upholstered in vinyl fabric
- Rubbish bin
- Side-by-side fridge (fridge 419l + freezer 247l)
- Smoke detector system control panel
- Sofa upholstered in vinyl fabric
- Soft touch switch plates
- Stainless steel washbasin
- Under top unit furniture with lacquered doors, internal shelves and drawers
- Vinyl floor
- Walls covered with std laminate and panels upholstered in vinyl fabric

CAPTAIN'S CABIN

- Audio-video system
 - Loudspeaker (2)
 - Mini Hi-fi
- Built in ceiling spotlight (2)
- Ceiling with lacquered ceiling frame and panels upholstered in vinyl fabric
- Digitally controlled A/C system
- Ivory lacquered door
 - Door handles
 - Door stops
- Light switches
- Locker with lacquered doors
- Opening portholes in stainless steel with mechanical hook
- Reading lights
- Safe
- Single bed
 - Mattress, pillow and bedcover
- Vinyl floor
- Walls covered with std laminate and panels upholstered in vinyl fabric

DOUBLE CREW CABIN

- Audio-video system
 - Loudspeaker (2)

- Mini Hi-fi
- Built in ceiling spotlight (2)
- Ceiling with lacquered ceiling frame and panels upholstered in vinyl fabric
- Digitally controlled A/C system
- Light switches
- Locker with ivory lacquered door with clothes rack
- Opening portholes in stainless steel with mechanical hook
- Reading lights (2)
- Single bed (2)
 - Mattress, pillow and bedcover (2)
- Vinyl floor
- Walls covered with std laminate and panels upholstered in vinyl fabric
- Washer/Drier machine

CREW BATHROOM

- Built in ceiling spotlight
- Clothes hook
- Combined washbasin faucet
- Electric WC in porcelain
- Lacquered ceiling
- Lacquered door
 - Door handles
- Light switches
- Mirror
- Opening portholes in stainless steel with mechanical hook
- Shower box in std laminate with tempered glass door
 - Corian shower floor
 - Shower faucet and pole
- Toilet brush holder
- Toilet roll holder
- Towel rail
- Vinyl floor
- Walls covered with std laminate and panels upholstered in vinyl fabric
- Washbasin unit lacquered with GRP top with opening doors

ACCESS TO CREW AREA

- Aluminum Venetian blind
- Curtain compartment
- Opening porthole in stainless steel with mechanic hook
- Wooden locker with door (2)

◆ TECHNICAL AREA

ENGINE ROOM

- Access to the engine room
 - Light alloy waterproof door
- Air compressor
- Air intakes (2)
- Coupling joint between adaptor and TS flange (2)
- Diesel engine MTU 16V 2435mhp (2)
- E/pump A/C
- Electric extractor (2)
- Engine exhaust muffler (2)

- Floor covered with anti slip aluminum
- Fluorescent light (2)
- Generator manifold and gas separator (2)
- Hydraulic oil heat exchanger (2)
- Hydraulic steering oil tank
- Hydraulic unit for gangway, swim ladder, garage hatch and aft door
- Hydraulic unit for platform, trims, trim tabs and steering
- Led light (6)
- Light switch
- Power generator 19kW 120/240V 60Hz with soundproof case (2)
- Protective cover added to coupling
- Stainless steel engine exhaust raiser (2)
- Support poles (2)
- Thermal acoustic insulation
- Waterproof camera interfaced with bridge (2)

PROPULSION AND MANEUVERING

- Electrohydraulic steer by wire steering
- Hydraulic bow thruster SH 340 KGF
- Hydraulic trim tabs (2)
- Nickel – Aluminium – Bronze surface propeller 6 Blades (2)
- Surface drive system with automatic trim

◆ SYSTEMS

FRESH WATER SYSTEM

- Boiler 30lt - electric (2)
- Fresh water inlet from water tank
- Fresh water outlet in engine room
- Fresh water pump with autoclave 24V 230V
- Level sensor
- Shore fresh water intake with pressure regulator
- Structural GRP main tank 1300l
- Water maker SEAFARI - 900 GPD (142l/h)

SEA WATER SYSTEM

- By-pass valve for emergency bilge discharge from engines (2)
- Dynamic seawater intake (3)
- Fire extinguishing and chain wash e/pump
- Sea water basket filter for engines, power generators, A/C pumps, services and fire extinguishing system (5)
- Seawater outlet for chain wash and fire extinguishing in forward locker

- Static seawater intake (2)

GREY WATER SYSTEM

- E/pump main tank discharge
- Level sensor
- Manifold by-pass for emergency grey and black water pump discharge
- Structural tank (320 lt)
- Valve 3 way in galley

BLACK WATER SYSTEM

- E/pump tank discharge
- Level sensor
- Polyethylene tank (300lt) with deck connection for tank pumping out

FIRE EXTINGUISHING SYSTEM

- Automatic/ manual system in the engine room and system area FM200
- Emergency engine shut down remote control
- Fire extinguishing system and alarm activation remote control
- Manual powder extinguisher 6Kg in engine room
- Manual powder extinguishers 1Kg (1 for each room)
- Manual powder extinguishers 6Kg (1 in the cockpit)
- Smoke detector system

AIR CONDITIONING SYSTEM

- Air conditioning for all cabins, bathrooms and main deck salon (crew bathroom excluded)
- Compressor for Tropical A/C main unit (144.000BTU)

ELECTRICAL SYSTEM

- Battery charger for generator
- Battery charger for generators (from services batteries)
- Earthing system all along the hull joined to the anodes protection (zincs) on the transom
- Electric panel
 - Voltage measuring instruments
- Emergency parallel connection between service batteries and engine starter
- Engine starter battery (4)
- Engines battery charger
- Ground Fault Interrupter 120VAC-6mA in all heads + galley + engine room
- Inverter 4kW 120V/60Hz for services
- Isolation transformer 25KVA
- Main electric panel with magneto-thermic switches
- MTU electronic digital panels for engine control (2)
- Parallel connection between generators battery

- Power generator starter battery (2)
- Preparation for TV and decoder: cable 120V + F connector + TV antenna cables in salon, cabins and in crew dinette
- Service battery (12)
- Services battery charger
- Shore plug 100A 60Hz
- Shore socket and loose cable
- Socket American type 120V, double in each box
- Switch off battery

FUEL SYSTEM

- Electronic fuel level remote indicator in dashboard
- Fuel decanter filter (2)
- Fuel sight gauge
- Manual fuel discharge/ load drainage pump (2)
- Racor fuel prefilter to generators (2)
- Structural GRP tank 6200l

BILGE SYSTEM

- Automatic/manual immersion E/pump for bilge discharge in each watertight compartment with level sensor
- E/pump with valve system for the separated or joint bilge system centralized suction
- Emergency engine room bilge system discharge through engines intake suction

◆ EQUIPMENT

- Bag with logo (3)
- Bed sheets, complete set
- Black mooring line 4x 25m Ø26, 1x 35m Ø8
- Cylindrical fender with line and cover (8)
- Diurnal navigation shapes mast
- Electrical manual
- Floating luminous buoy
- Interactive Digital Manual on Ipad
- Life jacket (16)
- Life raft (2x8)
- Life saver with floating line
- Means of unassisted reboarding
- Model indication plate XFA
- Pershing set bath towel (8)
- Pershing towel set (8)
- Safety floating line
- Safety hooks
- Spherical fender with line and cover (2)
- Telescopic boat hook
- Warning labels
- Weather station: clock, barometer, thermometer

This document shall not constitute in any circumstances whatsoever any offer by the shipyard to any person or be incorporated into any contract.

Any and all information contained in this document, including without limitation all technical data, performance, illustrations and drawings, are not contractual and refer to European standard models of motor yachts built by the shipyard and have been up-dated by the shipyard as of the date of issue of this document. The only valid technical reference or description is the specific parameters of each motor yachts cited only on purchase of the same. Therefore the only indications binding on the seller are contained solely in the sale agreement. This document is based on information available at the date of issue. Notwithstanding all efforts to insure accuracy, the information contained in this document may not cover all details, subsequent changes, not accurately foresee or report all possible scenarios. The shipyard reserves the right to modify its motor yachts and to substitute the manufacturers and/or the suppliers of any component and/or system and/or equipment due to product changes and/or improvements and/or availability of supply, changes in laws and/or regulations applicable, technology, know-how, provided that any substituted component and/or system and/or equipment of the motor yachts shall be of equivalent or superior quality to that shown in this Brochure. Displays, photos, schemes, designs or examples contained in this document are solely and exclusively reproduced to highlight the information contained. Due to the different characteristics of each yacht, the shipyard declines any and all liability for any use thereof on the basis of the information contained in this document.

This document and its contents may not be copied or reproduced and may not be modified or altered, in whole or in part.

The sale of this document and its contents is prohibited and no admitted.

Images may contain optional equipment or accessories, so do not necessarily comply with standard configuration.

