

345 CONQUEST

2022 MODEL YEAR



TEST #1

Test Date:
30-November-2018

MODEL	345 Conquest Pilot-house
HULL #	BWCE0468H819
ENGINE	Triple Mercury 250 V8 AMS
HORSEPOWER	750
GEAR RATIOS	1.85 : 1
PROP	16" x 18" Enertia Eco
FUEL CAPACITY	400 gal.

Notable Options: Joystick piloting, Chain rode, Port and starboard cockpit folding seat, Cockpit table, Cockpit freezer, Retractable sunshade, Active trim, 16" electronics, Cabin comfort package

WEIGHT SUMMARY

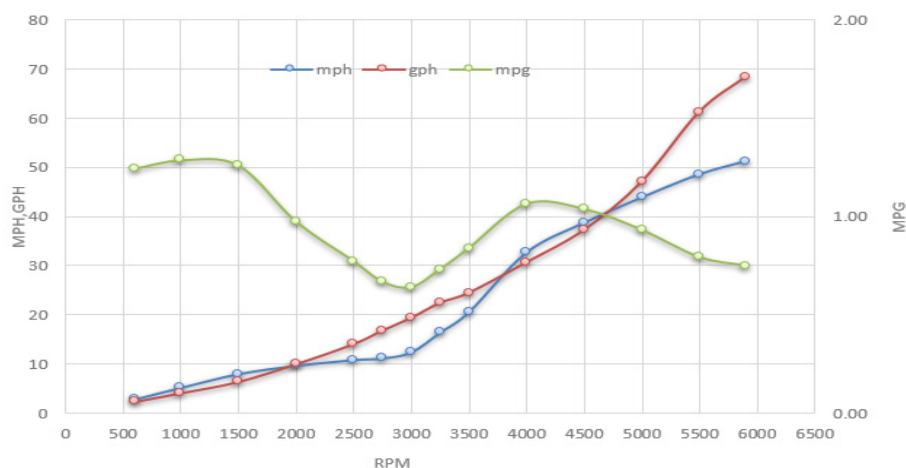
DRY WEIGHT	N/A
FUEL	203 gal.
WATER	0 gal.
TEST GEAR	25 lbs
PERSONNEL	410 lbs
TEST WEIGHT	N/A
WATER CONDITIONS	62° F
WEATHER CONDITIONS	48° F

Speed

Fuel Consumption

	RPM	mph	knots	gph	mpg	nmpg	range (mi)
Idle	600	2.8	2.4	2.3	1.24	1.08	448
	1000	5.2	4.5	4.0	1.29	1.12	464
	1500	8.0	6.9	6.3	1.26	1.10	454
	2000	9.7	8.4	9.9	0.97	0.85	351
	2500	10.8	9.4	14.0	0.77	0.67	278
	2750	11.2	9.7	16.8	0.67	0.58	240
	3000	12.4	10.7	19.4	0.64	0.55	230
	3250	16.4	14.2	22.4	0.73	0.63	263
	3500	20.5	17.8	24.5	0.84	0.73	302
	4000	32.7	28.4	30.7	1.07	0.93	383
	4500	38.7	33.6	37.3	1.04	0.90	374
	5000	43.9	38.1	47.1	0.93	0.81	336
	5500	48.6	42.2	61.3	0.79	0.69	285
WOT	5900	51.2	44.5	68.4	0.75	0.65	270

Acceleration: Time to plane 8.3 secs | Idle - 30 mph - 8.1 secs



NOTES: 1) SPEED DETERMINED BY GPS. FUEL CONSUMPTION BASED ON TOTAL USAGE BY THE ENGINES. MPG COMPUTED FROM MPH & GPH. RANGE BASED ON 90% OF TOTAL FUEL CAPACITY. 2) THE PERFORMANCE DATA SHOWN SHOULD BE CONSIDERED VALID ONLY FOR THE SPECIFIC BOAT WHOSE SERIAL NUMBER IS SHOWN AND ON THE DATE THIS TEST WAS PERFORMED. MANY FACTORS MAY AFFECT THE ACTUAL PERFORMANCE OF THIS BOAT OR OF SIMILAR BOATS. SUCH FACTORS INCLUDE, BUT ARE NOT LIMITED TO, INSTALLATION OF CERTAIN OPTIONS SUCH AS TOWERS AND HARD TOPS, VESSEL LOADING AND TRIM, WEATHER AND SEA CONDITIONS, ENGINES CONDITION, PROPELLER CONDITION AND HULL BOTTOM CONDITION. BOSTON WHALER MAKES NO GUARANTEE WHATSOEVER THAT THIS PERFORMANCE WILL BE REPEATED ON THIS BOAT AT A LATER DATE OR AT ANY TIME ON A SIMILARLY EQUIPPED BOAT.

345 CONQUEST

2022 MODEL YEAR



TEST #2

Test Date:
28-November-2018

MODEL	345 Conquest Pilot-house
HULL #	BWCE0468H819
ENGINE	Triple Mercury 300 V8 AMS
HORSEPOWER	900
GEAR RATIOS	1.85 : 1
PROP	14 5/8 x 19 Rev 4
FUEL CAPACITY	400 gal.

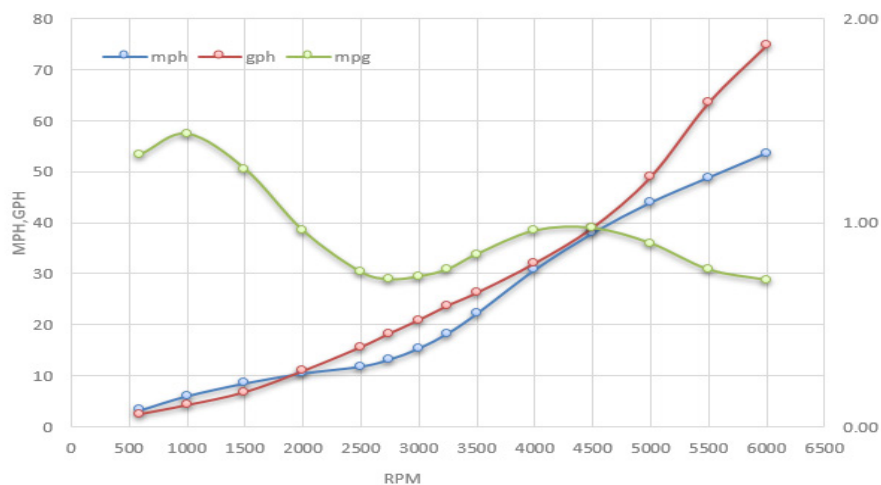
Notable Options: Joystick piloting, Chain rode, Port and starboard cockpit folding seat, Cockpit table, Cockpit freezer, Retractable sunshade, Active trim, 16" electronics, Cabin comfort package

WEIGHT SUMMARY

DRY WEIGHT	N/A
FUEL	203 gal.
WATER	0 gal.
TEST GEAR	25 lbs
PERSONNEL	410 lbs
TEST WEIGHT	N/A
WATER CONDITIONS	65° F
WEATHER CONDITIONS	48° F

Speed				Fuel Consumption			
	RPM	mph	knots	gph	mpg	nmpg	range (mi)
Idle	600	3.2	2.8	2.4	1.33	1.16	480
	1000	6.0	5.2	4.2	1.43	1.25	516
	1500	8.5	7.3	6.7	1.26	1.10	454
	2000	10.4	9.0	10.9	0.96	0.83	345
	2500	11.8	10.2	15.6	0.76	0.66	272
	2750	13.2	11.4	18.3	0.72	0.63	259
	3000	15.3	13.3	20.9	0.73	0.64	264
	3250	18.3	15.8	23.7	0.77	0.67	277
	3500	22.1	19.2	26.2	0.84	0.73	304
	4000	30.7	26.7	32.0	0.96	0.83	345
	4500	37.9	32.9	39.0	0.97	0.84	350
	5000	43.9	38.1	49.0	0.90	0.78	323
	5500	48.8	42.4	63.5	0.77	0.67	277
WOT	6000	53.6	46.5	74.8	0.72	0.62	258

Acceleration: Time to plane 8.3 secs | Idle - 30 mph - 8.4 secs



NOTES: 1) SPEED DETERMINED BY GPS. FUEL CONSUMPTION BASED ON TOTAL USAGE BY THE ENGINES. MPG COMPUTED FROM MPH & GPH. RANGE BASED ON 90% OF TOTAL FUEL CAPACITY. 2) THE PERFORMANCE DATA SHOWN SHOULD BE CONSIDERED VALID ONLY FOR THE SPECIFIC BOAT WHOSE SERIAL NUMBER IS SHOWN AND ON THE DATE THIS TEST WAS PERFORMED. MANY FACTORS MAY AFFECT THE ACTUAL PERFORMANCE OF THIS BOAT OR OF SIMILAR BOATS. SUCH FACTORS INCLUDE, BUT ARE NOT LIMITED TO, INSTALLATION OF CERTAIN OPTIONS SUCH AS TOWERS AND HARD TOPS, VESSEL LOADING AND TRIM, WEATHER AND SEA CONDITIONS, ENGINES CONDITION, PROPELLER CONDITION AND HULL BOTTOM CONDITION. BOSTON WHALER MAKES NO GUARANTEE WHATSOEVER THAT THIS PERFORMANCE WILL BE REPEATED ON THIS BOAT AT A LATER DATE OR AT ANY TIME ON A SIMILARLY EQUIPPED BOAT.

345 CONQUEST

2022 MODEL YEAR



TEST #3

Test Date:
02-June-2015

MODEL	345 Conquest
HULL #	USBWCE1875D515
ENGINE	Triple Mercury 350 Verado
HORSEPOWER	1050
GEAR RATIOS	1.75 : 1
PROP	16" x 17" Enertia Eco
FUEL CAPACITY	400 gal.
Notable Options: Joystick piloting, Windlass chain, Electric sunshade, Starboard cockpit bench seat	

WEIGHT SUMMARY

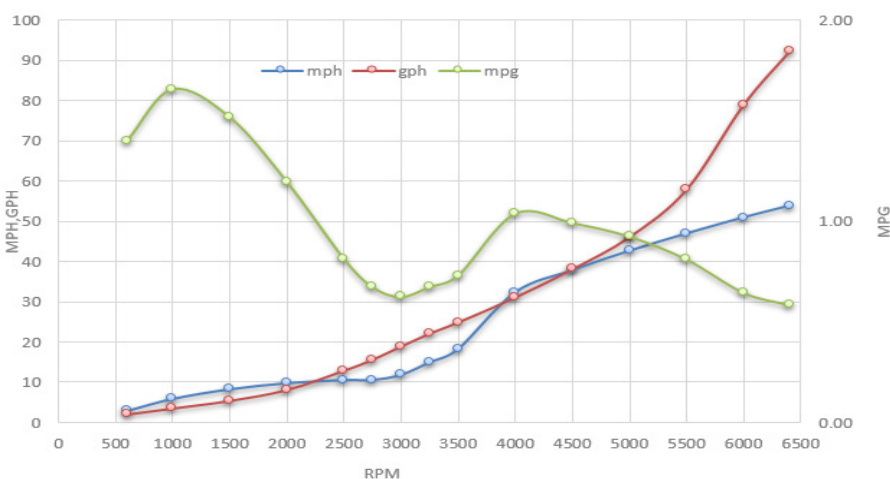
DRY WEIGHT	N/A
FUEL	200 gal.
WATER	40 gal.
TEST GEAR	25 lbs
PERSONNEL	350 lbs
TEST WEIGHT	N/A
WATER CONDITIONS	65° F
WEATHER CONDITIONS	68° F

Speed

Fuel Consumption

	RPM	mph	knots	gph	mpg	nmpg	range (mi)
Idle	600	2.8	2.4	2.0	1.40	1.22	504
	1000	5.8	5.0	3.5	1.66	1.44	597
	1500	8.2	7.1	5.4	1.52	1.32	547
	2000	9.7	8.4	8.1	1.20	1.04	431
	2500	10.5	9.1	12.9	0.81	0.71	293
	2750	10.5	9.1	15.6	0.67	0.58	242
	3000	11.8	10.2	18.9	0.62	0.54	225
	3250	14.9	12.9	22.1	0.67	0.59	243
	3500	18.2	15.8	24.9	0.73	0.63	263
	4000	32.3	28.0	31.1	1.04	0.90	374
	4500	37.8	32.8	38.1	0.99	0.86	357
	5000	42.6	37.0	46.1	0.92	0.80	333
	5500	46.9	40.7	57.9	0.81	0.70	292
	6000	50.9	44.2	79.0	0.64	0.56	232
WOT	6400	53.8	46.7	92.2	0.58	0.51	210

Acceleration: Time to plane 7.7 secs | Idle - 30 mph - 9.7 secs



NOTES: 1) SPEED DETERMINED BY GPS. FUEL CONSUMPTION BASED ON TOTAL USAGE BY THE ENGINES. MPG COMPUTED FROM MPH & GPH. RANGE BASED ON 90% OF TOTAL FUEL CAPACITY. 2) THE PERFORMANCE DATA SHOWN SHOULD BE CONSIDERED VALID ONLY FOR THE SPECIFIC BOAT WHOSE SERIAL NUMBER IS SHOWN AND ON THE DATE THIS TEST WAS PERFORMED. MANY FACTORS MAY AFFECT THE ACTUAL PERFORMANCE OF THIS BOAT OR OF SIMILAR BOATS. SUCH FACTORS INCLUDE, BUT ARE NOT LIMITED TO, INSTALLATION OF CERTAIN OPTIONS SUCH AS TOWERS AND HARD TOPS, VESSEL LOADING AND TRIM, WEATHER AND SEA CONDITIONS, ENGINES CONDITION, PROPELLER CONDITION AND HULL BOTTOM CONDITION. BOSTON WHALER MAKES NO GUARANTEE WHATSOEVER THAT THIS PERFORMANCE WILL BE REPEATED ON THIS BOAT AT A LATER DATE OR AT ANY TIME ON A SIMILARLY EQUIPPED BOAT.

345 CONQUEST

2022 MODEL YEAR



TEST #4

Test Date:
28-August-2019

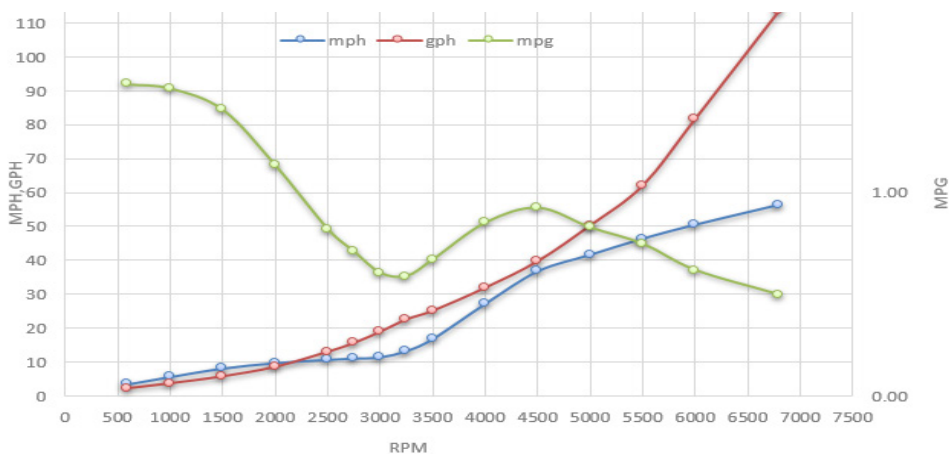
MODEL	345 Conquest
HULL #	USBWCE0030F920
ENGINE	Triple Mercury 400 Verado
HORSEPOWER	1200
GEAR RATIOS	1.75 : 1
PROP	16" x 17" Enertia Eco
FUEL CAPACITY	400 gal.
Notable Options: Joystick piloting, Port and starboard cockpit folding seats, Cockpit sunshade, Helm deck table, Radar, Dual 12" electronics	

WEIGHT SUMMARY

DRY WEIGHT	17,411 lbs
FUEL	197 gal.
WATER	0 gal.
TEST GEAR	25 lbs
PERSONNEL	360 lbs
TEST WEIGHT	19,008 lbs
WATER CONDITIONS	85° F
WEATHER CONDITIONS	78° F

Speed				Fuel Consumption			
	RPM	mph	knots	gph	mpg	nmpg	range (mi)
Idle	600	3.5	3.0	2.3	1.53	1.33	552
	1000	5.6	4.9	3.7	1.51	1.31	545
	1500	8.1	7.0	5.8	1.41	1.22	507
	2000	9.7	8.4	8.6	1.13	0.99	408
	2500	10.7	9.2	13.0	0.82	0.71	295
	2750	11.1	9.6	15.6	0.71	0.62	255
	3000	11.4	9.9	18.9	0.60	0.52	217
	3250	13.3	11.5	22.6	0.59	0.51	212
	3500	16.8	14.6	25.1	0.67	0.58	241
	4000	27.2	23.6	31.9	0.85	0.74	306
	4500	36.8	31.9	39.8	0.92	0.80	333
	5000	41.6	36.1	50.3	0.83	0.72	298
	5500	46.4	40.3	62.1	0.75	0.65	269
	6000	50.5	43.8	81.8	0.62	0.54	222
WOT	6800	56.4	48.9	113.8	0.50	0.43	178

Acceleration: Time to plane 9.7 secs | Idle - 30 mph - 8.8 secs



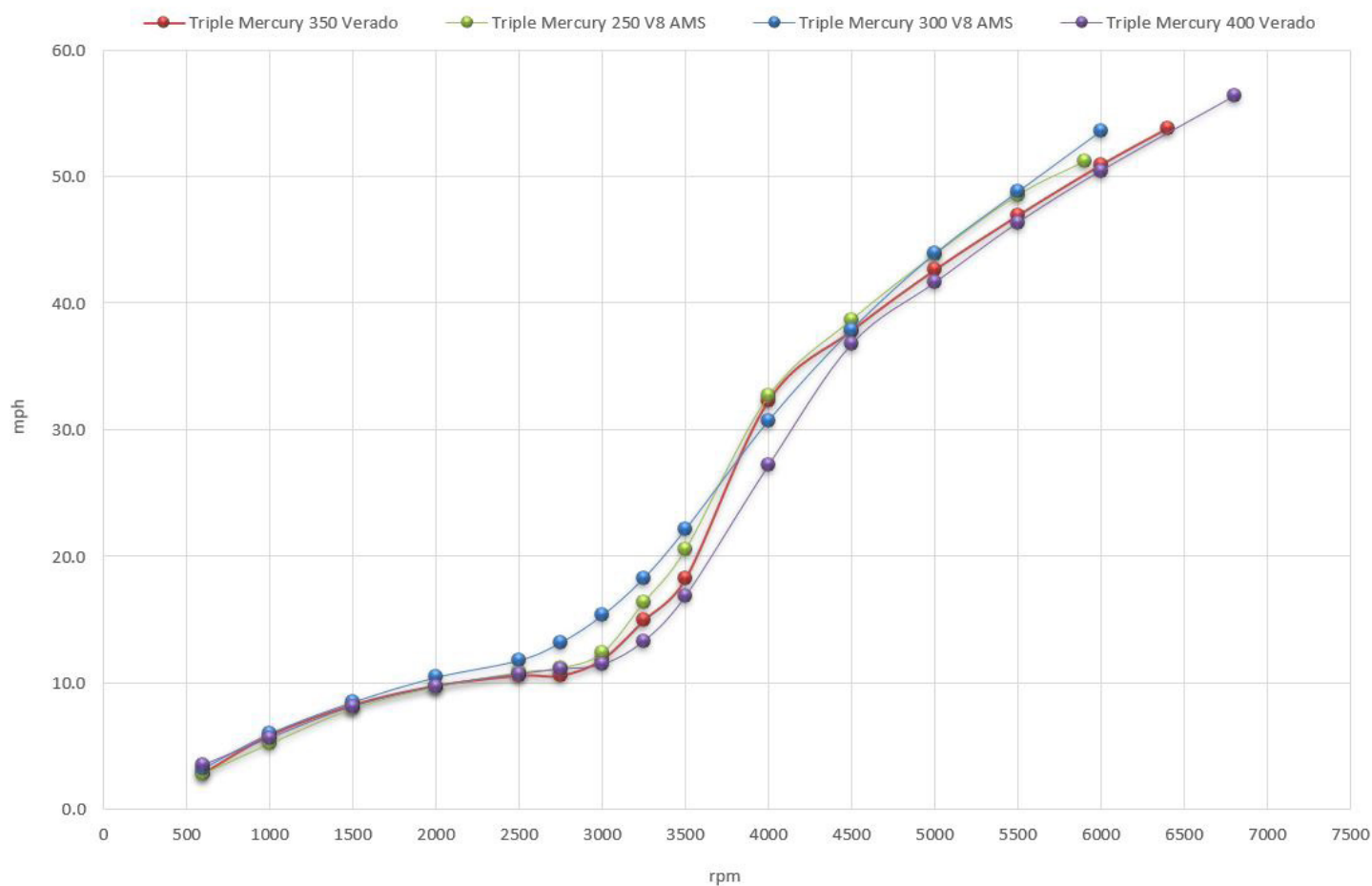
NOTES: 1) SPEED DETERMINED BY GPS. FUEL CONSUMPTION BASED ON TOTAL USAGE BY THE ENGINES. MPG COMPUTED FROM MPH & GPH. RANGE BASED ON 90% OF TOTAL FUEL CAPACITY. 2) THE PERFORMANCE DATA SHOWN SHOULD BE CONSIDERED VALID ONLY FOR THE SPECIFIC BOAT WHOSE SERIAL NUMBER IS SHOWN AND ON THE DATE THIS TEST WAS PERFORMED. MANY FACTORS MAY AFFECT THE ACTUAL PERFORMANCE OF THIS BOAT OR OF SIMILAR BOATS. SUCH FACTORS INCLUDE, BUT ARE NOT LIMITED TO, INSTALLATION OF CERTAIN OPTIONS SUCH AS TOWERS AND HARD TOPS, VESSEL LOADING AND TRIM, WEATHER AND SEA CONDITIONS, ENGINES CONDITION, PROPELLER CONDITION AND HULL BOTTOM CONDITION. BOSTON WHALER MAKES NO GUARANTEE WHATSOEVER THAT THIS PERFORMANCE WILL BE REPEATED ON THIS BOAT AT A LATER DATE OR AT ANY TIME ON A SIMILARLY EQUIPPED BOAT.

345 CONQUEST

2022 MODEL YEAR



345 Conquest Engine Comparison Graph



NOTES: 1) SPEED DETERMINED BY GPS. FUEL CONSUMPTION BASED ON TOTAL USAGE BY THE ENGINES. MPG COMPUTED FROM MPH & GPH. RANGE BASED ON 90% OF TOTAL FUEL CAPACITY. 2) THE PERFORMANCE DATA SHOWN SHOULD BE CONSIDERED VALID ONLY FOR THE SPECIFIC BOAT WHOSE SERIAL NUMBER IS SHOWN AND ON THE DATE THIS TEST WAS PERFORMED. MANY FACTORS MAY AFFECT THE ACTUAL PERFORMANCE OF THIS BOAT OR OF SIMILAR BOATS. SUCH FACTORS INCLUDE, BUT ARE NOT LIMITED TO, INSTALLATION OF CERTAIN OPTIONS SUCH AS TOWERS AND HARD TOPS, VESSEL LOADING AND TRIM, WEATHER AND SEA CONDITIONS, ENGINES CONDITION, PROPELLER CONDITION AND HULL BOTTOM CONDITION. BOSTON WHALER MAKES NO GUARANTEE WHATSOEVER THAT THIS PERFORMANCE WILL BE REPEATED ON THIS BOAT AT A LATER DATE OR AT ANY TIME ON A SIMILARLY EQUIPPED BOAT.