

Custom Line 140'

CUSTOM LINE



Custom Line 140'

NAVAL ARCHITECTURE

by Ferretti Group Engineering

EXTERIOR DESIGN

by Francesco Paszkowski Design

INTERIOR ARCHITECTURE

by Francesco Paszkowski Design

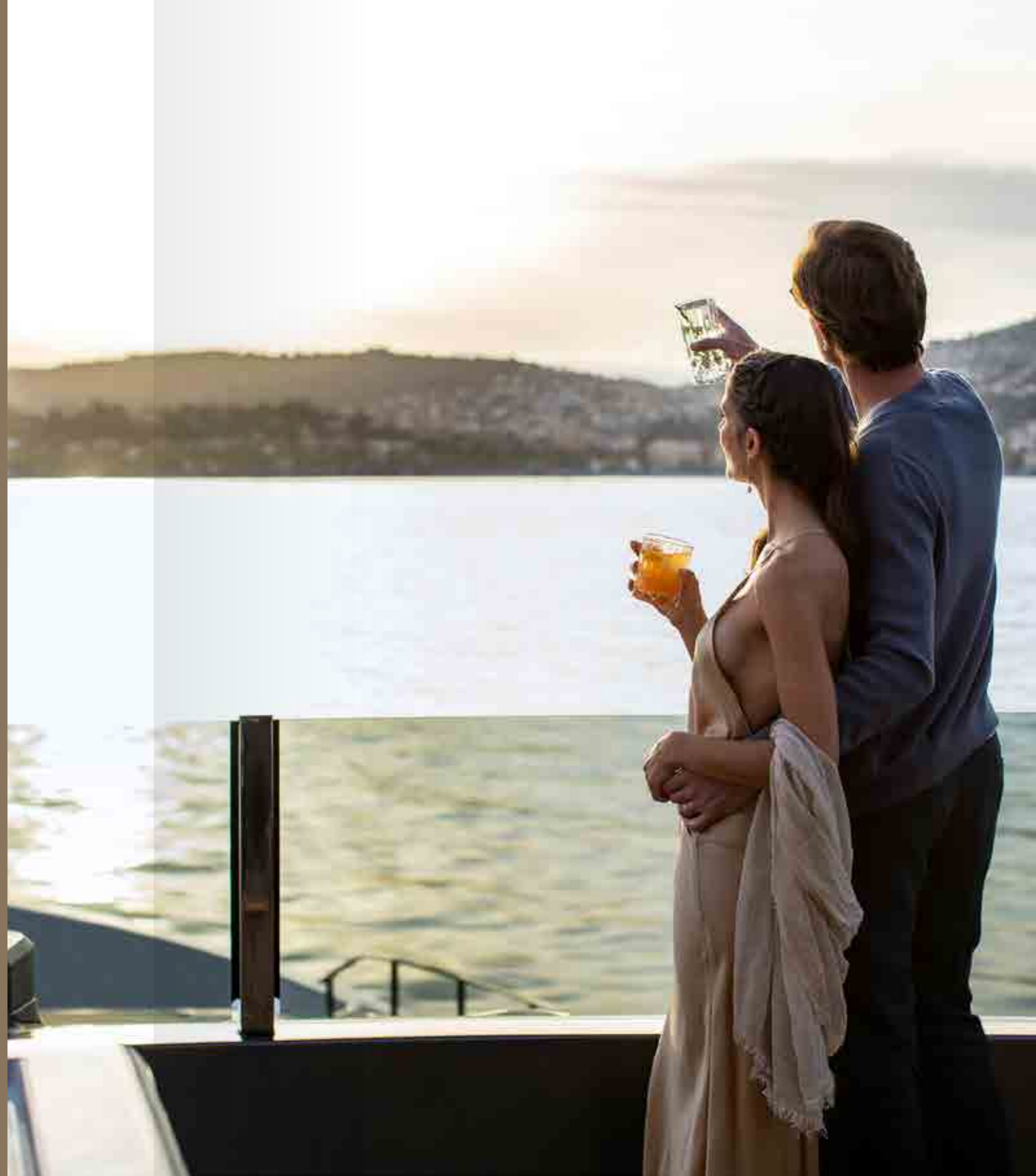
Beyond the line.

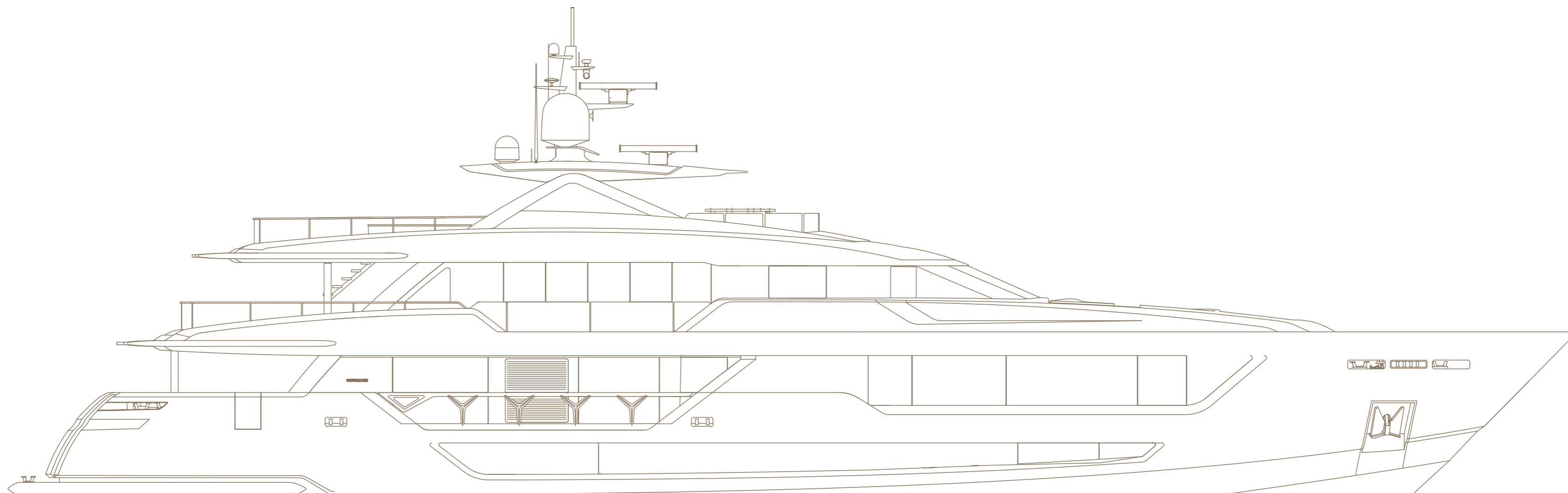
Some people stop at the superficial;
we strive to go beyond.

Because only those who cruise
know where to find the sublime:
Beyond the surface.

Beyond the Line.

See another sea with
the **Custom Line 140'**.
A reflection of the owner's personality,
she's more than a yacht;
she's a unique masterpiece.
Because cruising is an art.
The art of being different.
The art of movement.





DESIGN PHILOSOPHY [THE WORLD YOU LOVE, HERE ON THE SEA.]

The **Custom Line 140'** superyacht is a place to live with family and friends, embraced by the wonder of the sea. A place with all the flavour of home.

A 365 DAY DESTINATION.

Sea and sun have long been synonymous with yachting, making it a popular summer pastime. But there's more to it than savouring the deep blue on a hot day: let the Custom Line 140' show you how much there is to **enjoy on your private island at any time of year.**



The **Custom Line project management team** with our experts at the **Custom Line Atelier** support the owner on their journey right from the initial brief, to develop the yacht design and tailor it to their personal taste and lifestyle.



THE LARGEST PLANING YACHT WE'VE EVER BUILT

The Custom Line 140' is a supremely innovative tri-deck with an elegant yet functional new design. Using **cutting-edge carbon-fibre technology**, this semi-planing hull with low draft and gross tonnage boasts an unprecedented top speed for a yacht this size.

The hull windows are generously large, and the floor-to-ceiling glazing on deck offers wraparound sea views for a sense of **intimate contact with the water**.



**Some
people see
a shoreline;**



we see
an offshore odyssey.







The **flagship makes her entrance:** the majestic Custom Line 140' is an extraordinary masterpiece of design, technology and absolute comfort created by the Custom Line Atelier.



Dimensions

42,6 metres

length overall

8,54 metres

maximum beam

3 decks

399 GT

Ingeniously engineered
with fine Italian savoir faire,
this sublime superyacht
is a work of art on the water.







The Custom Line 140' is a remarkable **masterwork of naval design and technology.** Inspired by residential architecture and a quest for absolute comfort, the imaginative styling has created a sophisticated array of shapes and spaces.



Facts and figures

21,5 knots

top speed

18 sqm

cruising speed

2.000 nm

range

The wheelhouse is fitted with the I-Bridge® integrated bridge system: electronic-engineering know-how for a unique cruising experience.





Some
people see
a triangle;



we see
a new direction.





Sleek, powerful contours express the profoundly sporty aesthetic of this majestic planing vessel. **She is glorious in any light.**



Key Features

**Semi
planning
hull**

Zero

speed fins and gyroscopic stabilisers

IMO III

and SCR-ready

Carbon

fiber and hybrid materials integrated

**Enjoyable
ownership**

Innovative lightweight technology
with carbon fibre and hybrid materials
to deliver impressive high performance



This is what performance
is made of, with
the **Custom Line 140'**.





Grand Layout

over

300 sqm

interiors area

over

200 sqm

exterior area

Surfaces enter
a completely new,
bigger dimension.

Some
people see
a square;



we see a corner
of contemplation.





Welcome to your private island

The interior and exterior spaces on the main deck are fully integrated, while the guest areas and crew workspaces are clearly separated to assure the owners' total privacy.

A full-height glass door with both sliding and hinge mechanisms unites the living area with the outdoor lounge – a convivial 30-sqm zone stylishly furnished for sumptuous comfort.

The 45-sqm main saloon with dining and living areas is a formal setting defined by flowing lines that express Custom Line's signature elegance and sophistication to perfection. The refined craftsmanship catches the eye, typified by the diamond-cut leather used as a finishing, in the upholstery and on the ceiling.

The palatial living areas, 2.10-metre ceilings and four giant windows in the hull – one of which opens to starboard – convey a sense of fluid harmony and spaciousness in direct, deeply felt contact with the sea.



MAIN DECK | AFT DECK



MAIN DECK | AFT DECK



MAIN DECK | MAIN SALON



MAIN DECK | MAIN SALON

The immense main-deck saloon is an **exclusive place for conversation and contemplation** in harmony. Wonder is all around, inside and out.





Your island oasis

The exclusive 44-sqm full-beam owner apartment is a vast yet intimate living space with ever-present views of the sea. The double walk-in wardrobe at the entrance leads into the room, where the bed forms the centrepiece with its sophisticated contemporary design. The Custom Line artisans' masterly skill stands out in the pale ribbed-wood panelling against a mirrored backing.

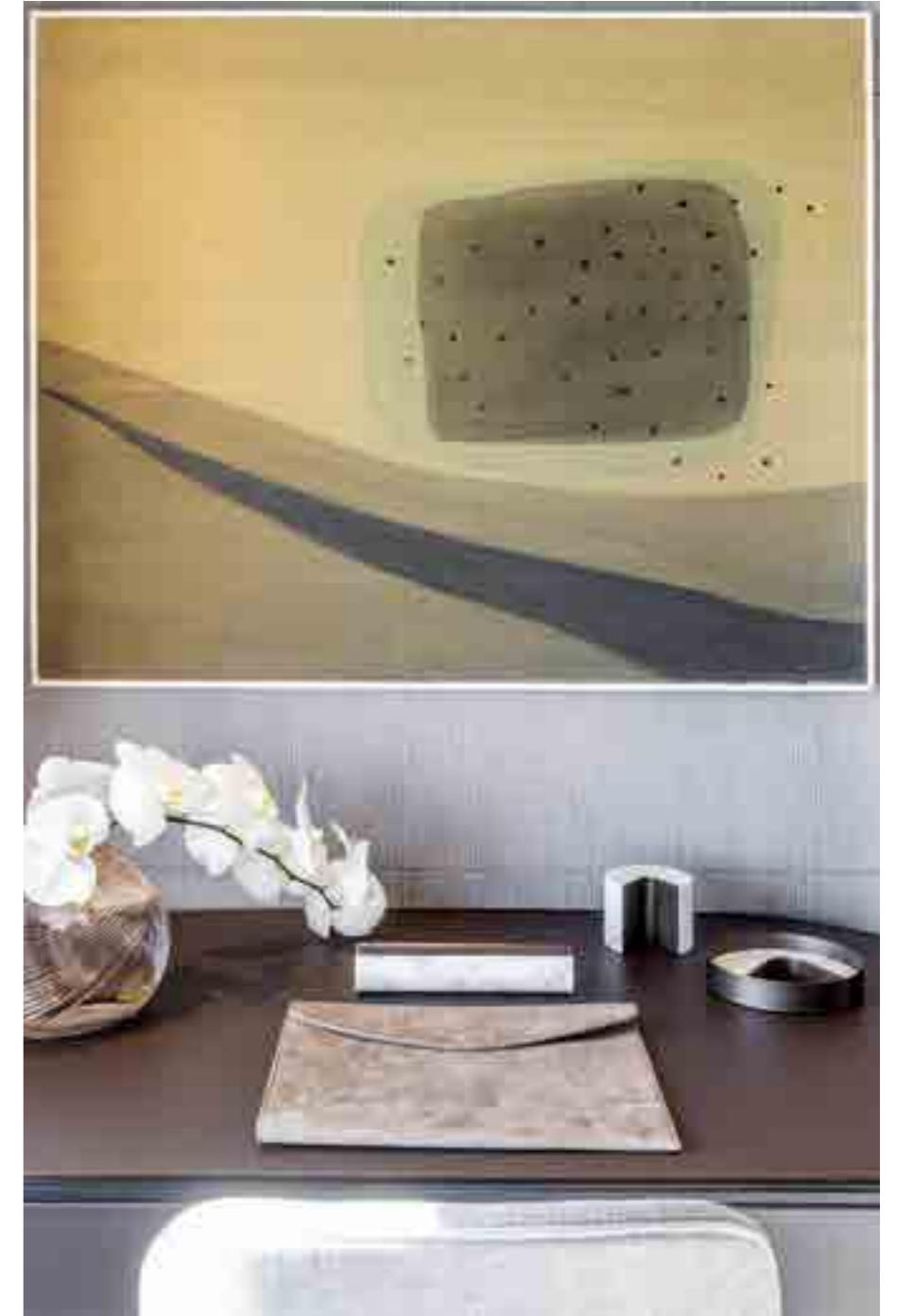
At the owner's request, the side windows to starboard can open out into an ample waterside terrace. A simple hydraulic mechanism extends the floor platform and handrail system out from the hull, creating a personal balcony suspended over the sea for the owner's exclusive use in total privacy.



MAIN DECK | OWNER'S SUITE



The owner's suite is a voluminous wide-body space to live and love in as your journey unfolds, a **bespoke personal residence on the water.**



MAIN DECK | OWNER'S SUITE

The owner can delight in **a private oasis of peace** and reflection in the panoramic terrace right over the sea.

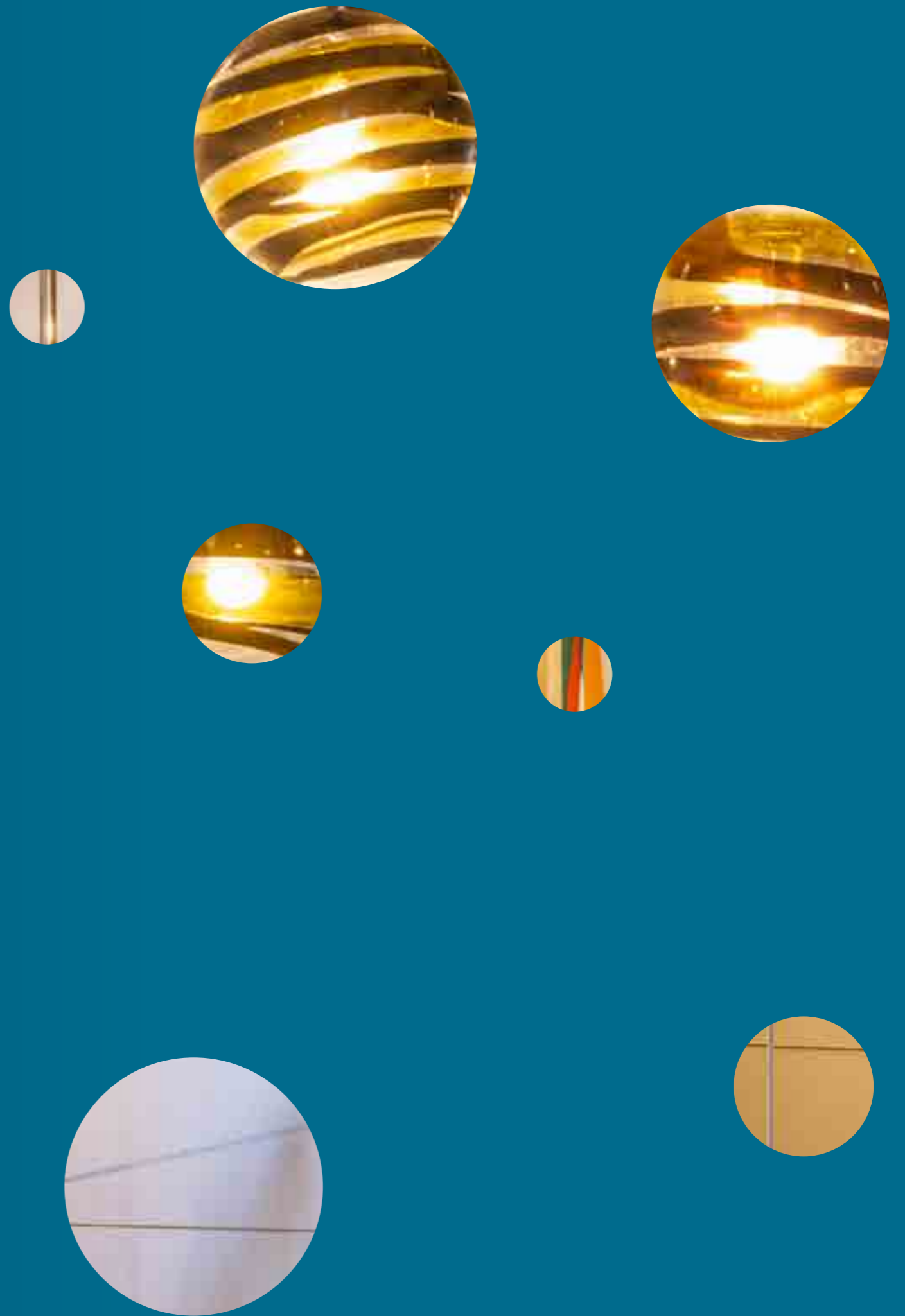


MAIN DECK | OWNER'S SUITE



MAIN DECK | OWNER'S SUITE

Some
people see
spheres;



we see
a galaxy of light.





An ocean of emotion

The upper deck offers two distinct multipurpose outdoor areas. Forward, a spacious sky lounge with comfortable social zones is the perfect place to savour the sensation of intimate contact with the sea.

This connects directly to the al fresco dining area aft through two external corridors: one to starboard for the exclusive use of the owner and guests, the other to port for the crew. A forward garage provides ample accommodation for a tender or rescue boat.



UPPER DECK | FORWARD AREA



An **idyllic space** to relax in together and have fun. But also simply to admire the beauty of the sea and the natural world all around.



UPPER DECK | FORWARD AREA

The forward living area is a spacious open-air lounge to enjoy together with your best friend, the sea.



UPPER DECK | FORWARD AREA



A sea of conviviality

The aft deck offers an intimate al fresco dining area and lounge seating up to 10 around the grand dining table. Spanning over 42 sqm, this is a space to enjoy at any time of day; the pleasure continues in the linked sky lounge, with a further 25+ sqm of panoramic comfort. These interconnected settings afford a genuine indoor-outdoor experience courtesy of the sliding doors with a fully opening hinge mechanism and the floor-to-ceiling windows to both starboard and port. The result is an oasis of luminous tranquillity with 180-degree views of the surrounding seascapes up close.

Forward, the spacious living area is the perfect place to relish the feeling of intimate contact with the waves. It links directly to the aft deck and wheelhouse via two side walkways: one reserved to the owner and guests and a service one dedicated to the crew.

Small service vessel like a tender find its perfect place in the forward garage.



UPPER DECK | SKY LOUNGE



UPPER DECK | SKY LOUNGE

Every deck has
a character all its own,
a variation on the theme
of comfort and style.







On the upper deck, the aft area forms a seamless continuum with the sky lounge. Amid the graceful yet functional design, the **pleasure of contemporary living never ends.**



UPPER DECK | SKY LOUNGE



UPPER DECK | SKY LOUNGE

The upper-deck sky lounge is enveloped in glass and light – for a **deep connection between inside and out**, as far as the horizon.





Inspired by the architecture of an elegant modern home, the design draws you into your **own private island**, a place to dwell in and savour.



UPPER DECK | SKY LOUNGE



Past and future cruise together aboard the Custom Line 140', where every detail exudes the glorious Italian nautical tradition, with all its originality and verve.



UPPER DECK | SKY LOUNGE



From the sky to the ocean

The sundeck is a special area that stands out for its sheer space, with over 70 sqm across three virtual outdoor zones that combine to offer a unique 360-degree view in direct contact with the sea.

The relaxation area aft, with hydromassage tub and sunbeds, and the American bar area forward, with its impressive structural top, meet amidships in a generous lounge area with expansive sofas designed to adapt to a variety of convivial situations under the carbon-fibre hard top.

Access to the deck is via an aft stairway exclusively for guests and a recessed staircase forward for the crew.



SUN DECK

The large **sun deck** is a scenic 70-sqm haven of blissful wellbeing to experience in total privacy, surrounded by absolutely beauty.



SUN DECK



SUN DECK





A world of fun

The beach area is a platform at the stern with a latest-generation electro-hydraulic system that transforms the aft deck into a terrace at the water's edge. This spacious private beach vaunts a sun area that converts into a fully multifunctional open-air lounge. With seamless continuity between the indoor and outdoor spaces and the sea, the area is fully appointed with structural and service furniture, enabling the owner family and guests to move freely from one side of the vessel to the other with ease.

There are no technical installations to take up space, so free-standing furniture can be arranged according to the owner's taste.



LOWER DECK | BEACH AREA

Some
people see
two colours;

we see
every shades of blue.





LOWER DECK | STARBOARD SIDE VIP CABIN



LOWER DECK | STARBOARD SIDE VIP CABIN

With **four en-suite cabins – three VIPs and a guest cabin** with twin beds and a pullman – every guest can experience the art of living the sea in 60 sqm of exquisite cruising comfort.



LOWER DECK | PORT SIDE VIP CABIN



LOWER DECK | GUEST CABIN



The engine room of every adventure

On the lower deck, the comfortable crew area with three double en-suite cabins accommodates six staff, while the spacious en-suite captain's cabin is next to the wheelhouse on the upper deck.

Located aft are the large engine room and, to port, the garage for a jet ski and a Williams SportJet 525 tender. Launching and recovering the tender are made easy with the lowering sled that acts as a ramp.

The service pantries are amidships, including the all-stainless-steel professional galley with ample storage. The well-organised functional service areas on the port side of each deck – from the main to the sun deck – are linked by an internal staircase and service lift. This assures total privacy for guests while the crew fulfil their duties between the main galley and the sun deck.

The areas devoted to the owner and guests are kept completely separate from those used by the crew on each deck. With this superyacht's specially developed naval architecture, the main deck is connected to the sun deck via external walkways and interior staircases exclusively for use by the crew.



MAIN DECK | GALLEY



MAIN DECK AND UPPER DECK PANTRIES

The raised wheelhouse on the upper deck is fitted with the **I-Bridge® integrated bridge system**. Drawing on the unrivalled cruising experience of the top yacht captains allied to supreme electronic-engineering know-how, the solution is safe, reliable and easy to use but also ergonomic with a smart, elegant design. The “Multicontrol system” makes it easy to manage all the various systems using the same intuitive logical interface comprising four 24-inch touchscreen monitors or optional 27-inch screens.



LOWER DECK | CAPTAIN CABIN

As part of our drive for **total cruising and seagoing comfort**, the yacht's various spaces and settings all enjoy peerless acoustic comfort, courtesy of a meticulous analysis of each individual noise source and its position on board. Floating floors, special materials and additional soundproofing between bulkheads and in ceilings are just some of the novel solutions used.



LOWER DECK | CREW CABIN



There is a **strong focus on privacy** by separating the guest areas from the crew quarters and technical spaces with sealed passageways to avoid disturbance or intrusion. Comfort during cruising and mooring is also assured by the **Naiad 525 stabilising fins** and the three optional **Seakeeper NG18 gyroscopic stabilisers**.





LOWER DECK | ENGINE ROOM

Dati tecnici

Technical data

Datos técnicos

Технические характеристики

技术数据

البيانات الفنية

CUSTOM LINE QUALITY: IT'S ALL IN THE DETAILS.

With Custom Line, your beyond-the-line experience will be extraordinary in every detail.

From customising the **interior** to suit **your lifestyle and vision** right through to the construction process, your Custom Line project team will ensure your yacht is delivered on time, on budget and to **the quality you expect**.

MOTORIZZAZIONE

2 x MTU 16V 2000 M96L potenza 2638 mhp / 1939 kW a 2450 g/min

VELOCITÀ (NODI)

Velocità massima
Velocità di crociera
Velocità di crociera economica

MTU 2638
21,5
18
11

AUTONOMIA (MIGLIA NAUTICHE)

Velocità massima di punta
Velocità di crociera
Velocità di crociera economica

MTU 2638
550
680
1850

DIMENSIONI PRINCIPALI

Loa = Lunghezza fuori tutto ISO 8666
Lh = Lunghezza di costruzione ISO 8666
Lg = Lunghezza al galleggiamento (a pieno carico)
Larghezza massima (compresi bottazzi)
Immersione alle eliche (a pieno carico)
Dislocamento ad imbarcazione scarica e asciutta
Dislocamento a pieno carico
Stazza Lorda
Numero massimo di persone imbarcabili
Certificazione

42,61	m/ft. in.	139' 10"
42,61	m/ft. in.	139' 10"
36,3	m/ft. in.	119' 1"
8,54	m/ft. in.	28' 0"
2,35	m/ft. in.	7' 9"
225	t/lb	496040
265	t/lb	584225
398	GT	
20		
RINA S.p.A. *HULL, • MACH, Y, Unrestricted Navigation		

DATI CARATTERISTICI

Tipo di carena: geometria variabile e deadrise
H massima = Altezza massima dalla chiglia al roll-bar
Sporgenze
Capacità serbatoi carburante
Capacità serbatoi acqua

8,5	°	
11,50	m/ft. in.	37' 9"
0,00	m/ft. in.	0' 0"
29000	lt./US gals.	7661
4000	lt./US gals.	1057

SPECIFICHE PRESTAZIONALI

i dati prestazionali sono stabiliti al seguente dislocamento:
e si riferiscono alla barca standard a 1/2 carico liquido,
con carena pulita, temp. 25° C, buone condizioni climatiche
e 10 persone a bordo.
sovraccaricando la barca di:
si ha una perdita di velocità massima pari a:
L'autonomia diminuisce di conseguenza

240	t/lb	529506
5	t/lb	11023
1	nodo	

Engineering design: Ferretti Group Engineering
Exterior design: Francesco Paszkowski Design
Interior architecture: Francesco Paszkowski Design
Interior design: Custom Line Atelier

MOTORIZZAZIONE

2 x MTU 16V 2000 M96L potenza 2638 mhp / 1939 kW a 2450 g/min

SPEED (KNOTS)

Maximum speed
Cruising speed
Economic cruising speed

MTU 2638
21,5
18
11

RANGE (NAUTICAL MILES)

Maximum recorded speed
Cruising speed
Economic cruising speed

MTU 2638
550
680
1850

MAIN SIZES

Loa = overall length ISO 8666
Lh = Hull length ISO 8666
Lwl = waterline length (boat fully laden)
Maximum beam
Depth under propellers (boat fully laden)
Displacement unladen
Displacement laden
Gross Tonnage
Maximum number of persons on board
Certification modules

42,61	m/ft. in.	139' 10"
42,61	m/ft. in.	139' 10"
36,3	m/ft. in.	119' 1"
8,54	m/ft. in.	28' 0"
2,35	m/ft. in.	7' 9"
225	t/lb	496040
265	t/lb	584225
398	GT	
20		
RINA S.p.A. *HULL, • MACH, Y, Unrestricted Navigation		

TECHNICAL DATA

Hull type: warped hull with spray rails and aft deadrise
H = Overall height from keel to roll bar
Appendages
Fuel tank capacity
Water tanks capacity

8,5	°	
11,50	m/ft. in.	37' 9"
0,00	m/ft. in.	0' 0"
29000	lt./US gals.	7661
4000	lt./US gals.	1057

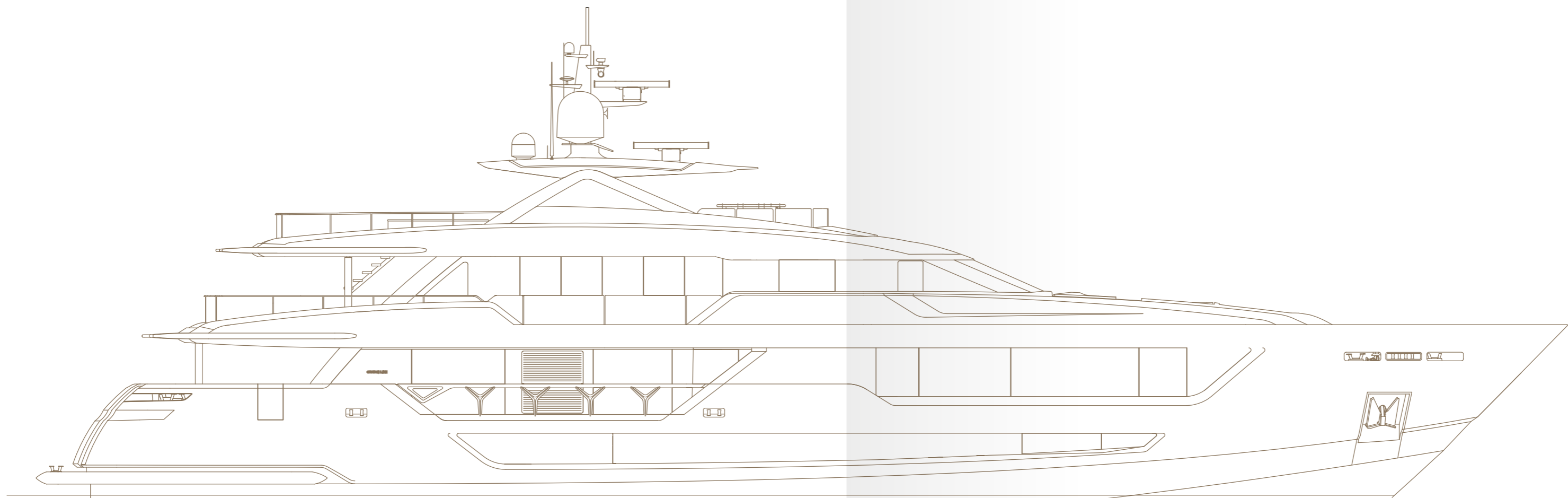
PERFORMANCE SPECIFICATIONS

the performance is estimated at the following conditions:
standard version displacement of the yacht
at half liquid load, clean hull, 25°C air temperature
good weather conditions, 10 persons on board
overloading the yacht by:
top speed decreases of:
Range will decrease accordingly

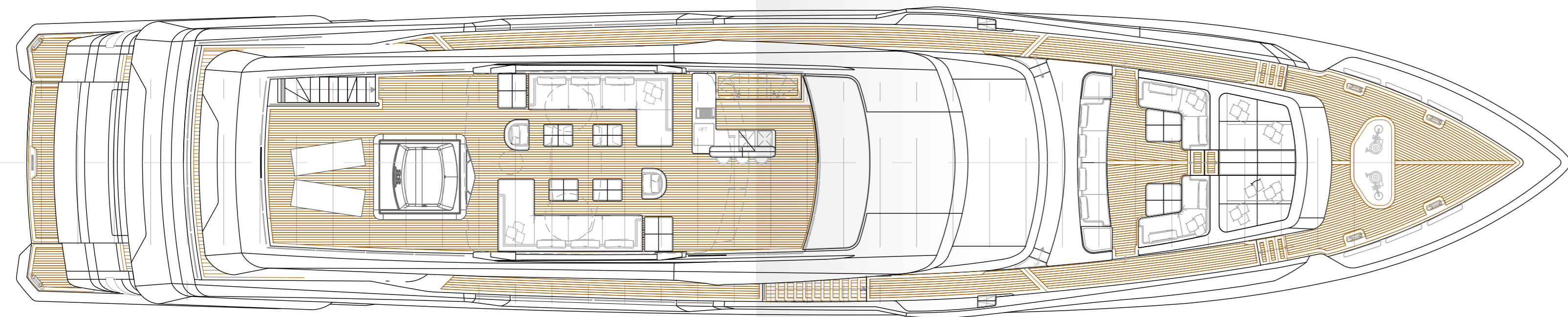
240	t/lb	529506
5	t/lb	11023
1	nodo	

Engineering design: Ferretti Group Engineering
Exterior design: Francesco Paszkowski Design
Interior architecture: Francesco Paszkowski Design
Interior design: Custom Line Atelier

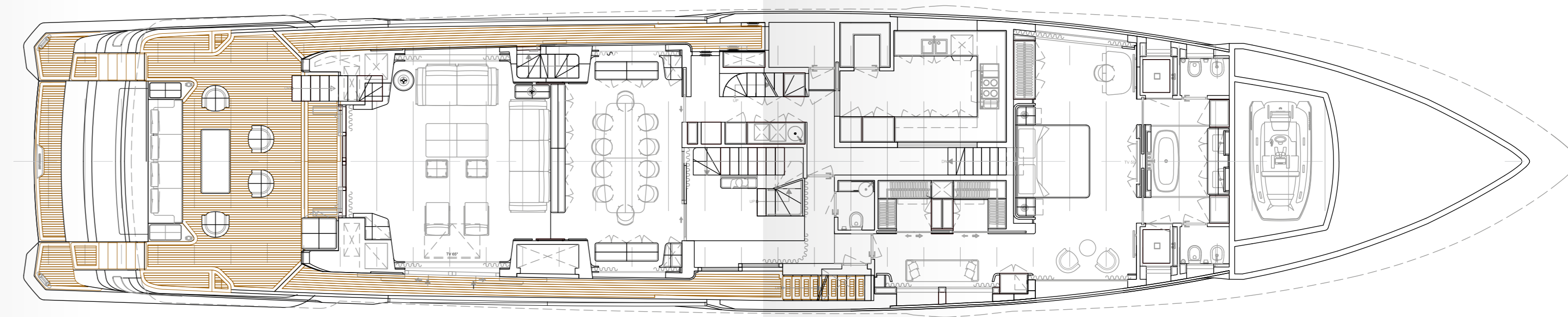
Custom Line 140'



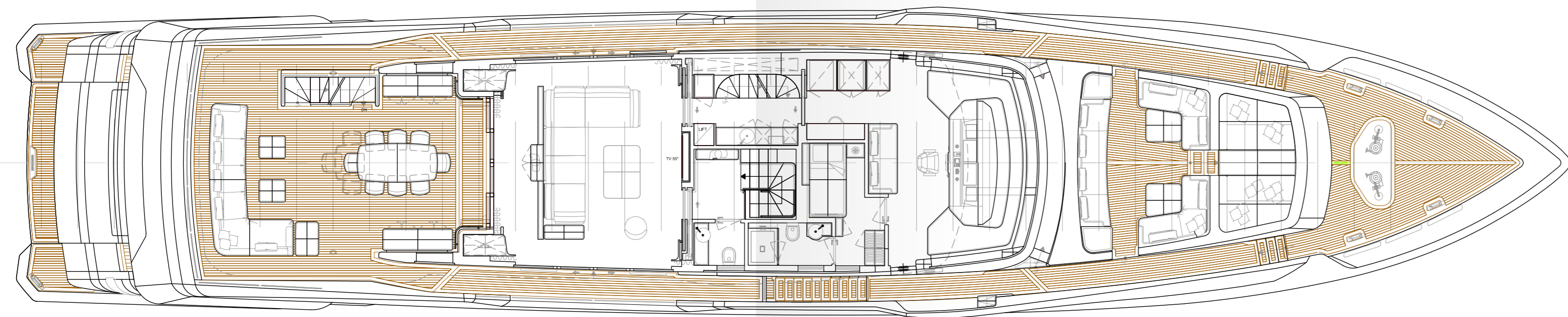
Sun deck



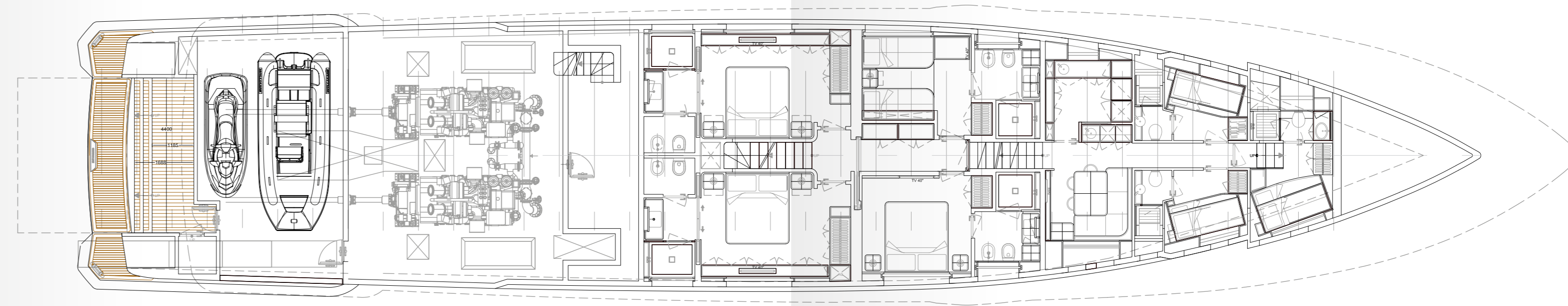
Main deck



Upper deck

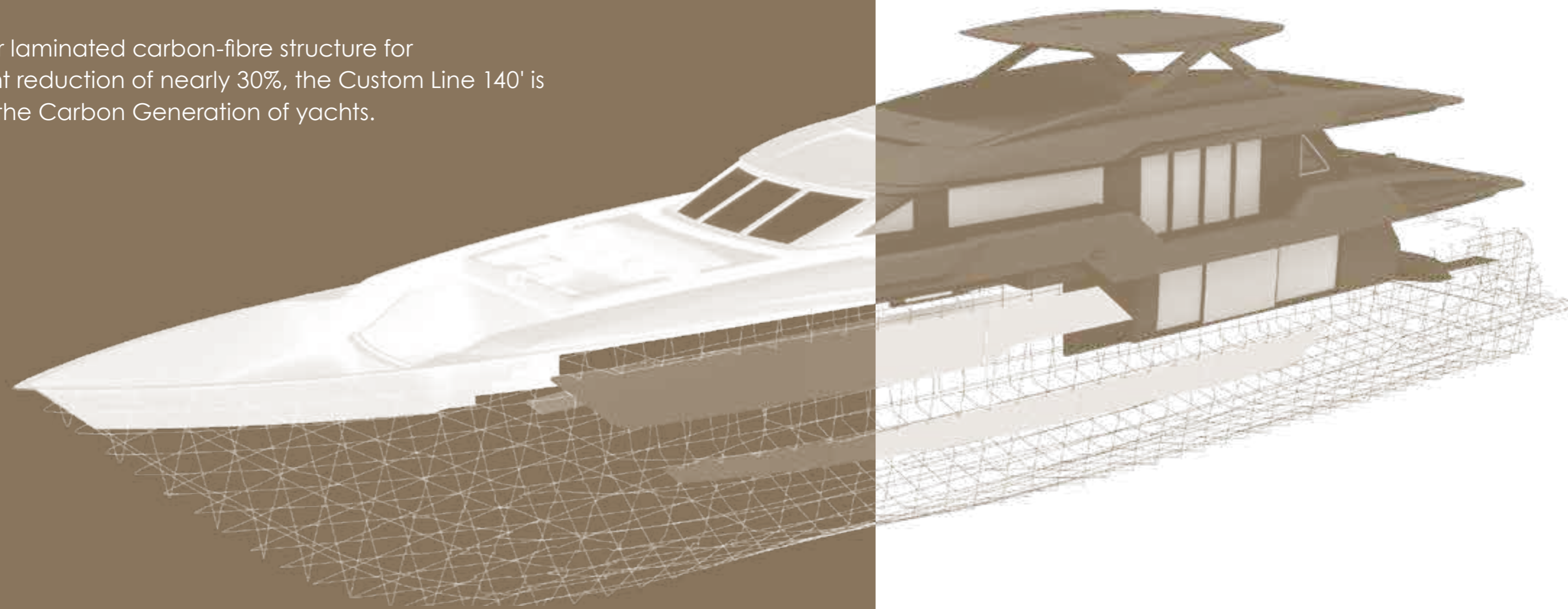


Lower deck



CARBON PROJECT

With her laminated carbon-fibre structure for a weight reduction of nearly 30%, the Custom Line 140' is part of the Carbon Generation of yachts.



The low centre of gravity and a beautiful balance between large on-board volumes have created a vessel with impressive static and dynamic stability.

The carbon structure and innovative hull have driven significant improvements in performance for a greater range, increased top speed and lower fuel consumption.

CERTIFICATION

Standard: C ✱ HULL • MACH Y, Unrestricted Navigation

On kind request: C ✱ HULL, • MACH, Y Ch,
Unrestricted Navigation, DMS,
Compliance REG Code (up to 12 pax)

Leading the Future



Creiamo grandezza

Come Gruppo leader della nautica di lusso, è questo il nostro impegno primario, l'ispirazione che ci guida, individualmente e collettivamente. È il valore che trasmettiamo ai nostri dipendenti, ai nostri brand, agli armatori.

Miglioriamo gli standard della nautica

Incoraggiamo i nostri professionisti a utilizzare know-how ed esperienza per rendere la nautica di lusso un polo di attrazione e un motore di sviluppo economico e tecnologico.

Crediamo nell'innovazione

Ferretti Group raggiunge l'eccellenza grazie alla costante innovazione e all'adozione di tecnologie avanzate. È così che otteniamo performance eccellenti e garantiamo sicurezza in mare, offrendo agli armatori esperienze senza eguali.

Creiamo valore

Supportiamo con risorse ed energie lo sviluppo a lungo termine dei nostri brand, rafforzando ulteriormente la loro capacità di creare valore. Questo ha assicurato negli anni un successo straordinario, consentendoci di diventare leader indiscusso nel settore della nautica di lusso.

Siamo vicini ed efficaci

Ferretti Group ha costruito nel tempo una rete internazionale di dealer e assistenza, così da soddisfare ogni necessità e desiderio degli armatori in ogni parte del mondo. La vicinanza al cliente è uno degli ingredienti del nostro successo duraturo.

Consideriamo l'impatto ambientale

Consapevole della necessità di considerare l'impatto ambientale e sociale dei propri prodotti e processi, Ferretti Group pubblica annualmente un Bilancio di Sostenibilità. Il documento illustra i principali effetti ambientali derivanti dalle attività del Gruppo e delinea le iniziative in atto per uno sviluppo sostenibile.

Creating Greatness

This is our commitment as a luxury yachting group. This is the spirit that drives us, individually and collectively. This is the value we bring for our employees, our brands, our clients and society as a whole.

Empowering Expertise

We continually spur each of our brands to go further. We leverage their special know-how, artisanal accomplishment and technological expertise to stay at the cutting edge of the nautical world.

Striving for Innovation

Ferretti Group delivers excellence through constant innovation and pioneering technology. This is how we achieve formidable performance and safety at sea, offering clients authentic experiences to satisfy their desires for affirmation and self-expression.

Creating Value

We focus our energy and resources on supporting our brands in their long-term development, further boosting their ability to create value. This has earned us extraordinary success over the years, helping the group become a pre-eminent player in today's yachting sector.

Going Global

Ferretti Group always endeavours to be close to the market and to our customers, doing whatever it takes to deliver exceptional performance. We have built up an agile, resourceful international dealer network, supported by high-end marketing initiatives to enhance our brands' worldwide visibility and profile.

Softening our impact on the environment

Ever aware of the need to consider the environmental and social side-effects of our products and processes, Ferretti Group publishes a Sustainability Report every year. This document maps the main impacts of our activities and outlines the initiatives in place towards more sustainable development.

LEGAL NOTICE

1. This brochure does not constitute an offer by the shipyard to any person under any circumstances whatsoever, nor may it be incorporated into any contract.

2. All the information in this brochure, including without limitation all technical and performance data, illustrations and drawings, has no contractual effect. That information refers to European standard models of motor yachts built by the shipyard and is accurate at the brochure's date of issue. The only valid technical description or reference content for an individual motor yacht is the exact specification stated at the time of purchase. Therefore, the only information that is binding on the seller is that contained in the sale agreement and associated manual. This brochure is based on information available at the date of issue. Notwithstanding Ferretti Group's best efforts to ensure accuracy, the information in this brochure may not cover all details or subsequent changes, nor does it claim to accurately foresee or detail all possible scenarios. Displays, photos, diagrams, designs or examples in this brochure are reproduced solely and exclusively to highlight the information contained. Each yacht is different, so the shipyard declines any and all liability for any use thereof on the basis of the information in this brochure.

3. The brochure and its contents must not be copied or reproduced in their entirety or in part.

4. Sale of this brochure is not permitted.

Design

Engineering design: Ferretti Group Engineering

Exterior design: Francesco Paszkowski Design

Interior architecture: Francesco Paszkowski Design

Interior design: Custom Line Atelier

Photos for CUSTOM LINE:

Giorgio Baroni

Maurizio Paradisi

Concept and art direction:

Armando Testa

Special thanks to Frette, Tornabuoni Arte, Venini.

FERRETTI GROUP SUPERYACHT YARD – CUSTOM LINE

Via Enrico Mattei, 26 · 60125 – Ancona, Italy

customline-yacht.com

CUSTOM LINE

BEYOND THE LINE

*The Custom Line book you have in your hands
is made entirely from sustainably produced paper.*





